



ESSENZA

Spring/Summer 2024

OUR STORY

We are ESSENZA. Our desire is to inspire, stimulate and move you. We offer comfort to help you feel yourself at home and sleep better. Whoever or wherever you are, ESSENZA makes this possible. Show us who you are and what your style is. Be unique. Be yourself. Be ESSENZA. In our extensive home and interior collections, you will find everything you need to turn your home into a stylish, personal work of art; luxurious, elegant and exclusive.

We are constantly looking for innovation from all the things that makes life more beautiful. We are inspired by the people around us, by other cultures and traditions, by the colours, smells, and tastes that we experience, whether closer to home or from far away. Finally, we are also inspired by Mother Earth. Nature is an inexhaustible source of inspiration for us. In all her seasons she has so much beauty to offer. We mix and match all these new impressions, insights and ideas in our own studio, forming elegant, inspiring and expressive collections.

For more than 30 years we have been designing iconic home and interior collections with great care to create stylish looks with a unique twist. Whether you like rich floral prints, love checks and stripes or go for a simple uni bedding: at ESSENZA we have something beautiful for everyone.

At ESSENZA we believe in buying less, but better. That is why we produce high-quality, sustainable products that are our response to today's throwaway culture. We design and manufacture our collections with love, care and attention to both people and the environment. We do this because we believe it is extremely important that everyone has the chance to get a better night's sleep.

Wir sind ESSENZA. Wir wollen inspirieren, begeistern und berühren. Ihnen Komfort bieten, ein Gefühl von Zuhause geben und Sie gut schlafen lassen. Wer oder wo auch immer Sie sind. ESSENZA macht dies möglich. Zeigen Sie, wer Sie sind und was Ihr Stil ist. Seien Sie einzigartig. Seien Sie Sie selbst. Seien Sie ESSENZA. In unseren umfangreichen Home & Living-Kollektionen finden Sie alles, was Sie brauchen, um Ihr Zuhause in ein elegantes, persönliches Kunstwerk zu verwandeln: prächtig, geschmackvoll und exklusiv.

Wir sind ständig auf der Suche nach Innovationen. Nach allem, was das Leben ein wenig schöner macht. Wir finden Inspiration bei den Menschen, die uns umgeben, in anderen Kulturen und Traditionen, in Farben, Düften und Aromen, denen wir auf unseren Reisen in die weite Welt oder ganz nah in unserer Heimat begegnen. Und schließlich: Bei Mutter Natur. Die Natur ist eine unerschöpfliche Quelle der Inspiration. In all ihren Jahreszeiten hat sie so viel Schönheit zu bieten. In unserem eigenen Atelier vereinen wir all diese neuen Eindrücke, Erkenntnisse und Ideen und kreieren elegante, inspirierende und ausdrucksstarke Kollektionen.

Seit über 30 Jahren entwerfen wir mit großer Sorgfalt unverwechselbare Home & Living-Kollektionen für ein stilvolles Interieur mit einem einzigartigen Akzent. Ob Sie üppige Blumendrucke lieben, Karos und Streifen mögen oder ein schlichtes Design bevorzugen, bei ESSENZA haben wir für jeden etwas Schönes.

Bei Essenza glauben wir, dass weniger mehr ist. Unsere Antwort auf die heutige Wegwerfkultur sind hochwertige und langlebige Produkte. Wir entwerfen und produzieren unsere Kollektionen mit Liebe, Sorgfalt und Aufmerksamkeit für Mensch und Umwelt. Denn wir denken, dass es außerordentlich wichtig ist, dass am Ende jeder gut schlafen kann.

Wij zijn ESSENZA. Wij willen inspireren, prikkelen en raken. Een stukje comfort bieden, je thuis laten voelen en je lekker laten slapen. Wie of waar je ook bent. ESSENZA maakt dat mogelijk. Laat zien wie je bent en wat je stijl is. Wees uniek. Wees jezelf. Wees ESSENZA. In onze uitgebreide home & living collecties vind je alles wat je nodig hebt om van jouw huis een elegant, persoonlijk kunstwerk te maken; rijk, verfijnd en exclusief.

Wij zijn continu op zoek naar vernieuwing. Naar alles wat het leven een stukje mooier maakt. We laten ons inspireren door de mensen om ons heen, door andere culturen en tradities, door kleuren, geuren en smaken die we opdoen tijdens een verre reis of juist dichterbij huis. En tot slot: door Moeder Aarde. De natuur is een onuitputtelijke inspiratiebron. In al haar seizoenen heeft ze zoveel moois te bieden. En al die nieuwe indrukken, inzichten en ideeën mixen en matchen we in onze eigen studio tot elegante, inspirerende en expressieve collecties.

Al ruim 30 jaar ontwerpen we met grote zorg kenmerkende home & living collecties voor een stijlvol interieur met een unieke twist. Want of je nu van rijke bloemenprints houdt, dol bent op ruiten en strepen of voor een uni kiest, bij ESSENZA hebben we voor iedereen iets moois.

Bij ESSENZA geloven we in buying less, but better. Daarom produceren we hoogwaardige, duurzame producten die een antwoord zijn op de hedendaagse wegwerpcultuur. Wij ontwerpen en vervaardigen onze collecties met liefde, zorg en aandacht voor mens en milieu. Want we vinden het ontzettend belangrijk dat uiteindelijk iederéén lekker kan slapen.



Duvet cover
Duvet cover
Fitted Sheet

MINTE dusty green
MINTE purple breeze
MINTE dusty green

CONTENTS

- 3 Our Story
- 7 Preface

NEW COLLECTION

- 8 Collection story Spring/Summer 2024
- 23 Chapter 1: Resilient Soul
- 73 Chapter 2: Illuminating Green

OVERVIEW

- 144 Duvet covers
- 168 Fitted sheets
- 174 Duvets and Pillows
- 185 Accessories
- 202 Towelling
- 216 Bathrobes & Homecoats
- 220 Kimonos
- 228 Bags
- 232 Merchandise
- 234 Discover more

INFORMATION

- 242 Our sustainability journey
- 244 Credits
- 246 Colophon



Kimono

ILONA ANNEBELLA vanilla

PREFACE



We are constantly in motion: in our jobs, with our friends and with our family. We love, we create, we celebrate, we are fed up, we lose, we mourn, we renew, we embrace, we move forward. It's not just our body, but also our mind that is fully in motion and development.

This motion is beautiful: it's brought us to where we are today and it continues to bring us further along. It's of significance that we want to take a moment to reflect on this every now and then. To find space to process, to celebrate and accept and from there, continue to look ahead with a fresh outlook.

With our Spring Summer 24 collection we aim to offer this space. The Gallery of Nature collection feels like an embrace with its soft materials and calming, harmonising colours, while it also refreshes at the same time with the renewed prints and sparkling colour accents.

Various elements of the Old Masters from the Rijksmuseum are back in surprising compositions and they show that we embrace change, yet we always stay true to ourselves. The Arts & Crafts movement teaches us that functionality can go hand in hand with beauty. A home needs to be functional, yet it is so much more than that. ESSENZA offers harmony and rest with her collection. With our collections we want to inspire you to create a space for yourself and those you love; a space to recharge so you can move ahead with a fresh and open outlook.

Spring feels to me like one of those moments. The season when the buds slowly open and you suddenly hear the birds sing their song: the moment you realise that a new energy is rising. It's then that I can't wait to meet summer in all her glory.

Kind regards,

Floor Smits,
Head of Brands

Wir sind ständig in Bewegung: bei der Arbeit, mit Freunden, der Familie, wir lieben, wir erschaffen, wir jubeln, wir lodern, wir verlieren, wir trauern, wir erneuern, wir umarmen, wir bewegen uns vorwärts. Nicht nur unser Körper, sondern auch unser Geist sind immer in Bewegung und Entwicklung.

Diese Bewegung ist etwas Wunderbares, denn sie hat uns dorthin gebracht, wo wir heute sind, und sie trägt uns weiter. Doch von Zeit zu Zeit möchten wir uns einen Moment Ruhe gönnen und über all das nachdenken. Wir suchen einen Ort, um dort zu reflektieren, abzuwägen und zu akzeptieren, um dann wieder frisch nach vorne zu schauen.

Mit unserer Kollektion Frühjahr/Sommer '24 wollen wir diesen Ort schaffen. Die 'Gallery of Nature'-Kollektion wirkt wie eine Umarmung: anschiessame Materialien, beruhigende, harmonisierende Farben und gleichzeitig belebend durch innovative Drucke und leuchtende Farbakzente.

Verschiedene Elemente der alten Meister aus dem Rijksmuseum kehren in überraschenden Kompositionen zurück und zeigen, dass wir den Wandel annehmen, uns aber immer selbst treu bleiben. Die Arts & Crafts-Bewegung lehrt uns, dass Funktionalität mit Schönheit Hand in Hand gehen darf. Ein Haus ist natürlich funktional, aber es ist so viel mehr. ESSENZA strebt mit der Kollektion Frühjahr/Sommer nach Harmonie und Ruhe. Mit unseren Kollektionen möchten wir Sie dazu inspirieren, für sich selbst und die Menschen, die Sie lieben, einen Ort zu schaffen, an dem Sie sich erholen und mit einem positiven und freien Gefühl leben können.

Für mich ist der Frühling immer einer dieser wunderbaren Momente. Die Zeit, in der die Knospen langsam hervorschauen, man plötzlich wieder die Vögel singen hört: der Moment, in dem man merkt, dass neue Energie strömt. Dann kann ich es kaum erwarten, den Sommer in vollen Zügen zu genießen.

Liebe Grüße,

Floor Smits
Head of Brands

We zijn continu in beweging: in ons werk, met vrienden, familie, we hebben lief, we creëren, we vieren feest, we balen, we verliezen, we rouwen, we vernieuwen, we omarmen, we gaan vooruit. Niet alleen ons lichaam maar ook onze geest is volop in beweging en ontwikkeling.

Deze beweging is prachtig, het heeft ons gebracht waar we nu zijn, en het brengt ons telkens weer verder. Niet voor niets dus, dat we daar af en toe even bij stil willen staan. Dat we een plek zoeken om te verwerken, te vieren en te accepteren om vervolgens weer met een frisse blik vooruit te kijken.

Met onze Spring Summer 24 collectie willen we deze plek aanreiken. De Gallery of Nature collectie voelt als een omhelzing door de zachte materialen en rustgevende, harmoniserende kleuren terwijl het tegelijkertijd verfrist met vernieuwende prints en sprankelende kleuraccenten.

Verschillende elementen van de oude meesters uit het Rijksmuseum komen terug in verrassende composities en laten zien dat we verandering omarmen, maar altijd trouw blijven aan onszelf. De Arts & Crafts beweging leert ons dat functionaliteit gepaard mag gaan met schoonheid. Een huis is uiteraard functioneel, maar het is zo veel meer. ESSENZA reikt met haar collectie harmonie en rust aan. Met onze collecties willen we inspireren om een plek voor jezelf en de mensen die je lief hebt te creëren waar je oplaadt en met een positieve en open blik weer doorgaat.

Voor mij voelt het voorjaar altijd als zo'n moment. De periode waarin de knoppen langzaam uitkomen, je de vogels ineens weer hoort zingen: het moment waarop je beseft dat er een nieuwe energie ontluikt. Dan kan ik niet wachten om met volle teugen de zomer tegemoet te gaan.

Lieve groeten,

Floor Smits
Head of Brands

GALLERY OF NATURE

Just like a babbling brook, we find ourselves in a constant state of development. The ESSENZA Spring/Summer '24 bedding collection embodies this philosophy. We embrace change while staying true to ourselves. Ancient elements from nature, art, and culture rediscover a renewed significance in the present.

Brought to life in a fresh colour palette, the collection offers an open and familiar outlook on the future. Soothing and light colours infuse vitality into each design.

The collection feels like an embrace. The materials are soft, supple, and lightweight, giving it an elegant look & feel. The collection's classic character, combined with durable fabrics, makes the items timeless and encourages them to be combined with various prints and materials.

This season, we present prints that showcase an innovative composition of elements from paintings by the Old Masters of the Rijksmuseum in Amsterdam. It illustrates how the history of art continues to captivate and inspire us. Carefully selected elements from different paintings have been redesigned and given a new shape. By digitizing them and working with layering, colour, and placement, they acquire a modern twist and the unique ESSENZA character.

Besides the Old Masters, we also see a unique handpainted flowerprint that has been abstracted into bold solid surfaces, exuding both tranquillity and energy.

The organic and nature-inspired motifs and patterns reminiscent of the Arts & Crafts movement. Just like within this movement, comfort and aesthetics form an important synergy in this collection.

Developing home & living collections is an intimate process; we create products that will be used in the most personal setting: the intimacy of your home. This gives it a unique meaning and connection. It's not just about providing comfort, we also want these items to have a positive impact on your wellbeing.

Allow yourself to be enveloped in renewed positive energy through this collection, empowering you to envision and manifest your dreams. The collection invites you to find your own rhythm, to experience moments of clarity and gentleness. To cherish all that is beautiful in your life, and face new adventures with an open mind.

Wie ein fließender Bach befinden wir uns in einer ständigen Entwicklung. Die Kollektion Frühjahr/Sommer 2024 von ESSENZA verkörpert diese Philosophie. Wir begrüßen Veränderungen und bleiben uns selbst treu. Antike Elemente aus Natur, Kunst und Kultur finden in der Gegenwart eine neue Bedeutung.

In einer frischen Farbpalette zum Leben erweckt, bietet die Kollektion einen offenen und vertrauten Blick in die Zukunft. Beruhigende und helle Farben verleihen jedem Dessin Lebendigkeit.

Die Kollektion fühlt sich wie eine Umarmung an. Die Materialien sind weich, geschmeidig und leicht und verleihen ihr einen eleganten Look & Feel. Der klassische Charakter der Kollektion, kombiniert mit langlebigen Stoffen, sorgt für zeitlose Artikel und lädt dazu ein, sie mit verschiedenen Drucken und Materialien zu kombinieren.

In dieser Saison präsentieren wir Drucke, die eine innovative Komposition von Elementen aus Gemälden der Alten Meister des Rijksmuseums in Amsterdam zeigen. Es zeigt, wie die Kunstgeschichte uns immer noch fasziniert und inspiriert. Sorgfältig ausgewählte Elemente aus verschiedenen Gemälden wurden neu gestaltet und in eine neue Form gebracht. Durch die Digitalisierung und die Arbeit mit Schichten, Farben und Platzierungen erhalten sie eine moderne Note und den einzigartigen ESSENZA-Charakter.

Neben den Alten Meistern sehen wir auch einen einzigartigen Druck aus handgemalten Blumen, die zu einem kraftvollen Dessin abstrahiert wurden und daher sowohl Ruhe als auch Energie ausstrahlen. Die organischen und von der Natur inspirierten Motive und Muster erinnern an die Arts & Crafts-Bewegung. Wie auch in dieser Bewegung bilden Komfort und Ästhetik in dieser Kollektion eine wichtige Synergie.

Die Entwicklung einer Home & Living-Kollektion ist ein besonderer Prozess. Wir stellen Produkte her, die im persönlichsten Umfeld verwendet werden, in der Geborgenheit Ihres Zuhauses. Dies verleiht der Kollektion eine einzigartige Bedeutung und Verbindung und soll nicht nur Komfort bieten, sondern auch einen positiven Einfluss auf die Stimmung haben.

Lassen Sie sich von dieser Kollektion mit neuer, positiver Energie umhüllen, die Ihnen dabei hilft, Ihre Träume zu visualisieren. Die Kollektion lädt Sie ein, Ihren eigenen Rhythmus zu finden und Momente der Klarheit und Sanftheit zu erleben. All die schönen Dinge, die Sie in Ihrem Leben haben, wertzuschätzen und neuen Abenteuern unvoreingenommen entgegenzutreten.

Net zoals een kabbelend beekje bevinden we ons in een constante staat van ontwikkeling. De ESSENZA lente/zomer '24 bedding collectie belichaamt deze filosofie. We omarmen verandering, maar blijven altijd trouw aan onszelf. Eeuwenoude elementen uit de natuur, kunst en cultuur vinden hun plek weer terug in het heden op een geheel eigen wijze.

Uitgevoerd in een fris kleurenpalet biedt de collectie een open en vertrouwde blik op de toekomst. Kleuren met een helend en kalmerend karakter brengen vitaliteit in elk ontwerp.

De collectie voelt als een omhelzing. De materialen zijn zacht, soepel en licht wat zorgt voor een elegante look & feel. Het klassieke karakter van de collectie in combinatie met duurzame stoffen maakt de items tijdloos en prikkelt om zich te laten combineren met verschillende prints en materialen.

We presenteren dit seizoen prints die een vernieuwend compositiespel van elementen uit schilderijen van de oude meesters uit het Rijksmuseum in Amsterdam laten zien. Het illustreert hoe de geschiedenis van kunst ons blijft boeien en inspireren. De zorgvuldig geselecteerde elementen uit verschillende schilderijen hebben opnieuw vorm gekregen. Door ze te digitaliseren, te werken met gelaagdheid, kleur en plaatsing krijgen ze een moderne inslag en kenmerkend ESSENZA karakter.

Maar we zien ook een unieke print van met de hand nageschilderde bloemen die geabstraheerd zijn tot krachtige volvlakken en daardoor zowel rust als energie ademt.

Organische en op de natuur geïnspireerde motieven en herhaling doen denken aan de Arts & Crafts beweging. Net zoals binnen deze beweging vormen comfort en esthetiek een belangrijke synergie in deze collectie.

Het ontwikkelen van home & living collecties is een bijzonder proces. We maken producten die in de meest persoonlijke setting worden gebruikt; in de geborgenheid van je huis. Hierdoor krijgt het een unieke betekenis en verbondenheid. Het moet niet alleen comfort bieden, maar ook een positieve impact hebben op je gemoed.

Laat je met behulp van deze collectie omhullen met hernieuwde, positieve energie, die je helpt jouw dromen te visualiseren. De collectie nodigt uit om je eigen ritme te vinden, om momenten van helderheid en zachtheid te ervaren. Om al het mooie wat je in je leven hebt te koesteren, en nieuwe avonturen met open blik tegemoet te gaan.

PREMIUM



Leila vanilla

The Leila print is the modern-day sister of the Karli print, the type of iconic floral print you would expect from ESSENZA. The designers have created a composition of flowers from different paintings from the Old Masters archive. The print displays countless, finely-painted flowers from all seasons, most of which were relatively rare during the time of the Old Masters. By using three ton-sur-ton colours this season, this print gets a modern yet classic feel.

Der Leila Print ist die moderne Schwester von Print Karli, ein Dessin mit einem ikonischen Blumenprint, wie man ihn von ESSENZA erwarten kann. Die Designer haben eine Komposition von Blumen aus verschiedenen Gemälden aus dem Archiv der Alten Meister geschaffen. Mit feinem Pinsel sind zahlreiche Blumenarten aus verschiedenen Jahreszeiten zu sehen, von denen die meisten zu ihrer Zeit etwas Besonderes waren. Durch die Verwendung von drei Ton-in-Ton Farben wirkt der Druck modern und klassisch zugleich.

De Leila print is het moderne zusje van print Karli: een design met een iconische bloemenprint zoals je van ESSENZA kan verwachten. De ontwerpers hebben een compositie gemaakt van bloemen van verschillende schilderijen uit het archief van de oude meesters. Met fijn penseel zijn talrijke soorten bloemen te zien uit verschillende jaargetijden, waarvan de meesten in die tijd bijzonder waren. Door dit seizoen gebruik te maken van drie ton-sur-ton kleuren voelt de print eigentijds maar toch klassiek aan.

PREMIUM



Yfke cobalt blue

The Yfke print is based on an original hand-painted, European block print from the 19th Century that was used to create wall paper. Wall paper started to become popular in the middle of the 18th Century and used to be made from textile waste, also known as rag paper. After applying a base colour, the sheets are printed using wooden blocks with a pattern. Each colour scheme requires a specific block print. When you look close enough at this opulent flower print, you'll see a diamond pattern shining through. This shows that this pattern was used to place this print repeatedly.

Der Yfke-Print stammt von einem handgemalten europäischen Blockdruck aus dem 19. Jahrhundert, der für Tapeten verwendet wurde. Die Papiertapete kam Mitte des 18. Jahrhunderts auf und wurde damals aus Textilresten, auch Hadernpapier genannt, hergestellt. Nach dem Auftragen einer Grundfarbe werden die Bögen mit gemusterten Holzklötzen bedruckt. Jeder Farbdurchlauf erfordert einen anderen Druckstock. Wenn man sich diesen üppigen Blumendruck genau ansieht, kann man eine Art Rautenmuster erkennen. Dies deutet darauf hin, dass dieses Muster dazu verwendet wurde, den Druck wiederholt zu platzieren.

De Yfke print is afkomstig van een originele handgeschilderde 19e eeuwse, Europese blokprint die voor behang werd gebruikt. Papier behang komt in het midden van de achttiende eeuw op en werd in die tijd van textielresten gemaakt, ook wel lomppapier genoemd. Na het aanbrengen van een grondkleur worden de vellen bedrukt met houten blokken met een patroon. Voor elke kleurgang is een andere blokdruk nodig. Als je goed naar deze weelderige bloemenprint kijkt zie je dat er een soort ruitpatroon doorschemert. Dit wijst erop dat dit patroon werd gebruikt om de print herhaaldelijk te kunnen plaatsen.

SIGNATURE



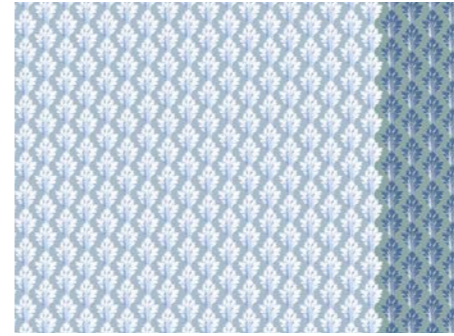
Isabella azur blue

The lush floral print Isabelle shows richly placed flowers taken from paintings by the Old Masters from the Rijksmuseum in Amsterdam. This voluminous floral print exudes strength and richness and symbolises the blossoming of life.

Der üppige Blumendruck Isabelle zeigt reichlich platzierte Blumen nach Gemälden alter Meister aus dem Rijksmuseum in Amsterdam. Dieser voluminöse Blumendruck strahlt Kraft und Reichtum aus und symbolisiert das Aufblühen des Lebens.

De weelderige bloemenprint Isabelle laat rijkelijk geplaatste bloemen zien die afkomstig zijn van schilderijen van de oude meesters uit het Rijksmuseum in Amsterdam. Deze volumineuze bloemenprint straalt kracht en rijkheid uit en symboliseert de bloei van het leven.

SIGNATURE



Tesse zen blue

Tesse is a decorative ornamental print. Ornaments, or 'versierselen' as they were known in the 17th-century Netherlands, were commonly used at the time. Ornamental shapes were characterised by stylisation, symmetry or the repetition of a motif, all three of which are clearly visible in this Tesse print. The original of this print is an etching dating back to 1817 from the Rijksmuseum in Amsterdam archives.

Tesse ist ein dekorativer Ornamentdruck. Ornamente, oder wie im Niederländischen des 17. Jahrhunderts, "Versierselen", waren zu dieser Zeit weit verbreitet. Ornamente zeichnen sich durch Stilisierung, Symmetrie oder Wiederholung eines Motivs aus. Bei dem Tesse-Dessin sind diese drei Merkmale deutlich erkennbar. Das Original dieses Prints ist eine Radierung aus 1817 aus dem Archiv des Rijksmuseums.

De Tesse is een decoratieve ornamentale print. Ornamenten, of, zoals in het 17de eeuwse Nederlands, 'versierselen', werden toentertijd veelvuldig toegepast. Vormen van het ornament worden gekenmerkt door stilering, symmetrie of herhaling van een motief. Voor de print Tesse zijn deze drie kenmerken duidelijk zichtbaar. Het origineel van deze print is een ets uit 1817 uit het archief van het Rijksmuseum in Amsterdam.

SIGNATURE



Annebella zen blue

A romantically widely placed floral print on a calming plain background. In the Annebella, you will find various flowers such as a striped camellia, lilies, Japanese peony, cherry blossom, Japanese iris, chrysanthemum, and lotus flower. These flowers are sourced from the Rijksmuseum in Amsterdam. They are coloured photographs taken by the Japanese photographer Kazumasa Ogawa, around 1890. The generous placement on a soft, slightly contrasting background creates a captivating print.

Ein romantischer, luftig platzierter Blumendruck auf beruhigendem, unifarbigen Hintergrund. Annebella zeigt verschiedene Blumen wie eine gestreifte Kamelie, Lilien, japanische Pfingstrose, Kirschblüte, japanische Schwertlilie, Chrysantheme und Lotusblume. Diese Blumen stammen aus dem Rijksmuseum. Es handelt sich um Farbfotografien des japanischen Fotografen Kazumasa Ogawa aus der Zeit um 1890. Durch die großzügige Platzierung auf einem weichen, leicht kontrastierenden Hintergrund entsteht ein sehr ansprechender Print.

Een romantisch luchtige geplaatste bloemenprint op een rustgevende uni achtergrond. In de Annebella vind je verschillende bloemen zoals een gestreepte camelia, lelies, Japanse pioenroos, kersenbloesem, Japanse iris, chrysant en lotus bloem. Deze bloemen zijn afkomstig uit het Rijksmuseum. Het zijn ingekleurde foto's gemaakt door de Japanse fotograaf Kazumasa Ogawa, rond 1890. Door de ruime plaatsing op een zachte, licht contrasterende achtergrond ontstaat er een heel innemende print.

SIGNATURE



Rosemary spot on pink

The Rosemary print is a ton-sur-ton variation on ESSENZA's lush floral print Isabelle. By incorporating a solid colour palette, this design evokes tranquility, while the voluminous flowers on the print exude strength and richness.

Der Rosmary-Druck ist eine tonale Variante des üppigen Blumendrucks Isabelle von ESSENZA. Die unifarbene Farbpalette sorgt für Ruhe, während die schönen, voluminösen Blumen des Drucks Kraft und Reichtum ausstrahlen.

De Rosemary print is een ton-sur-ton variatie op de weelderige bloemen print Isabelle van ESSENZA. Door deze in een uni kleurenpalet te maken wordt er rust ingebouwd, terwijl de prachtige volumineuze bloemen op de print kracht en rijkheid uitrusten.

Kj

SIGNATURE



Phaea woodrose

Phaea is based on free work from photographer Kreetta Järvenpää (born in 1974, Finland) and shows a late summer seasonal flower arrangement. The choice of flowers clearly display the specific season. The photo shows a sustainable selection of 'slow grown' flowers from Finland that would be blooming at that specific time. This work shows gorgeous hues of burnt orange, illustrating the feeling of a warm, late summers' day. During this season, the Finnish sky regularly turns pink, making this a well suiting background colour for Phaea.

Phaea basiert auf einer freien Arbeit der Fotografin Kreetta Järvenpää (geb. 1974, Finnland) und zeigt ein Blumenarrangement der Spätsommerzeit. Die Jahreszeit ist durch die Wahl der Blumen deutlich erkennbar. Das Bild zeigt eine nachhaltige Auswahl von "langsam gewachsenen" Blumen aus Finnland, die zu dieser Zeit tatsächlich blühten. Dieses Werk zeigt wunderschöne Orangetöne, mit denen das Foto das Gefühl eines warmen Spätsommertages illustriert. In Finnland ist der Himmel zu dieser Zeit regelmäßig rosa gefärbt, was eine passende Hintergrundfarbe für Phaea darstellt.

Phaea is gebaseerd op vrij werk van fotografe Kreetta Järvenpää (geboren in 1974, Finland) en toont een nazomers seizoensbloemstuk. Het seizoen is duidelijk zichtbaar door de keuze van de bloemen. De foto toont een duurzame selectie van 'slow grown' bloemen uit Finland die op dat moment ook daadwerkelijk in bloei waren. Dit werk laat prachtige gebrande oranje tinten zien, waarmee de foto het gevoel van een warme eindzomerse dag illustreert. De lucht is in Finland in deze periode regelmatig rozig gekleurd, wat het een passende achtergrondkleur maakt voor Phaea.

SIGNATURE



Floor illusion blue

Floor is a version of our bestselling print, Fleur, but designed using tonal colours, resulting in a beautifully subtle and classic motif with a contemporary look. Floor owes its allure to a quiet simplicity with a ton-sur-ton print that retains the depth of this iconic flower print.

Das Dessin Floor ist eine Abwandlung unseres Bestsellers Fleur, jedoch in tonalen Farben gehalten. So erhalten Sie einen schönen, subtilen und klassischen Druck mit einem modernen Look. Floor besticht durch eine ruhige Schlichtheit, denn der Druck ist Ton in Ton angelegt, ohne die Tiefe des ikonischen Blumendrucks zu verlieren.

De Floor is een afgeleide van onze bestseller-print de Fleur, maar dan uitgevoerd in tonale kleuren. Hierdoor krijg je een prachtige, subtiel en klassieke print met een eigentijdse look. De Floor dankt haar allure aan stille eenvoud doordat de print ton-sur-ton is opgezet, zonder de diepte van de iconische bloemenprint te verliezen.

SEASONAL



Dorena white

A romantically widely placed floral print on a calming plain background. In the Dorena, you will find various flowers such as a striped camellia, lilies, Japanese peony, cherry blossom, Japanese iris, chrysanthemum, and lotus flower. These flowers are sourced from the Rijksmuseum in Amsterdam. They are coloured photographs taken by the Japanese photographer Kazumasa Ogawa, around 1890. The different flowers are placed underneath each other and in rows, which gives this print a modern twist.

Ein romantisch breit angelegter Blumendruck auf einem beruhigenden einfarbigen Hintergrund. Auf dem Dorena-Dessin finden Sie verschiedene Blumen wie eine gestreifte Kamelie, Lilien, japanische Pfingstrose, Kirschblüte, japanische Iris, Chrysantheme und Lotusblume. Diese Blumen stammen aus dem Rijksmuseum in Amsterdam. Es handelt sich um Farbfotografien des japanischen Fotografen Kazumasa Ogawa aus der Zeit um 1890. Durch die großzügige Platzierung auf einem weichen, leicht kontrastierenden Hintergrund entsteht ein zeitgenössischer Druck.

Een romantisch luchtige bloemenprint op rustgevende uni achtergrond. In de Dorena vind je verschillende bloemen zoals een gestreepte camelia, lelies, Japanse pioenroos, kersenbloesem, Japanse iris, chrysant en lotus bloem. Deze bloemen zijn afkomstig uit het Rijksmuseum. Het zijn ingekleurde foto's gemaakt door de Japanse fotograaf Kazumasa Ogawa, rond 1890. Door de verschillende bloemen onder elkaar en in banen te plaatsen krijgt het geheel een moderne twist.

SEASONAL



Imara zen blue

The Imara showcases a hand-painted silhouette print featuring abstracted Clematises. The Clematis is a climbing plant that comes in many variations: from small subtle flowers to very large colourful ones. The Imara print incorporates all these different types of Clematis and reduces them to the strength of their shapes. By making this print in contrasting colours, it radiates both tranquillity and valiant energy.

Imara zeigt einen handgemalten Scherenschnittdruck mit abstrahierten Clematisblüten. Die Clematis ist eine Kletterpflanze, die es in vielen Variationen gibt: von kleinen, zarten Blüten bis hin zu sehr großen, bunten Blüten. Der Imara-Druck nimmt all die verschiedenen Arten von Clematis auf und reduziert sie auf die Stärke ihrer Formen. Durch die kontrastreichen Farben strahlt dieser Druck sowohl Ruhe als auch eine kraftvolle Energie aus.

De Imara toont een handgeschilderde silhouet print van geabstraheerde Clematissen. De Clematis is een klimplant die in heel veel variaties voorkomt: van kleine subtiel bloemetjes tot hele grote kleurrijke bloemen. In de Imara print zitten al deze verschillende soorten Clematissen verwerkt en zijn ze terugbracht tot de kracht van de vorm van deze prachtige bloemen. Door deze print in contrasterende kleuren te maken straalt hij zowel rust als energie uit.

PREMIUM



Yfke easy green

The Yfke print is based on an original hand-painted, European block print from the 19th Century that was used to create wall paper. Wall paper started to become popular in the middle of the 18th Century and used to be made from textile waste, also known as rag paper. After applying a base colour, the sheets are printed using wooden blocks with a pattern. Each colour scheme requires a specific block print. When you look close enough at this opulent flower print, you'll see a diamond pattern shining through. This shows that this pattern was used to place this print repeatedly.

Der Yfke-Print stammt von einem handgemalten europäischen Blockdruck aus dem 19. Jahrhundert, der für Tapeten verwendet wurde. Die Papiertapete kam Mitte des 18. Jahrhunderts auf und wurde damals aus Textilresten, auch Hadernpapier genannt, hergestellt. Nach dem Auftragen einer Grundfarbe werden die Bögen mit gemusterten Holzklötzen bedruckt. Jeder Farbdurchlauf erfordert einen anderen Druckstock. Wenn man sich diesen üppigen Blumendruck genau ansieht, kann man eine Art Rautenmuster erkennen. Dies deutet darauf hin, dass dieses Muster dazu verwendet wurde, den Druck wiederholt zu platzieren.

De Yfke print is afkomstig van een originele handgeschilderde 19e eeuwse, Europese blokprint die voor behang werd gebruikt. Papier behang komt in het midden van de achttiende eeuw op en werd in die tijd van textielresten gemaakt, ook wel lompenpapier genoemd. Na het aanbrengen van een grondkleur worden de vellen bedrukt met houten blokken met een patroon. Voor elke kleurgang is een andere blokdruk nodig. Als je goed naar deze weelderige bloemenprint kijkt zie je dat er een soort ruitpatroon doorschemert. Dit wijst erop dat dit patroon werd gebruikt om de print herhaaldelijk te kunnen plaatsen.

PREMIUM



Felipa dusty green

This jacquard design owes its stylised flower pattern to the Ophelia print inspired by the Arts and Crafts movement, an English art and industrial design movement from the second half of the 19th century. Felipa is an exquisitely detailed design, executed in a rich jacquard weave, giving this apparently tonal design depth and character and a subtle, luxurious appearance.

Dieses Dessin verdankt sein stilisiertes Blumenmuster dem Ophelia-Print, der von der Arts & Crafts-Bewegung inspiriert wurde. Das Felipa-Dessin ist wunderschön detailliert und wird in einem reichhaltigen Jacquard ausgeführt, der diesem Ton-in-Ton Dessin Tiefe und Charakter verleiht. Wenden Sie den Bettbezug für ein luxuriöses, unifarbenes Styling.

Het gestileerde bloemenpatroon van de Felipa is geïnspireerd op de Arts & Crafts stroming, een Engelse beweging in de kunst en industriële vormgeving uit de laatste helft van de 19e eeuw. De Felipa is prachtig gedetailleerd ontworpen en wordt uitgevoerd in een rijke jacquard waardoor deze ogenschijnlijke tonale print diepte en karakter krijgt en subtiele luxe uitstraalt. Draai het dekbedovertrek om en ontdek een rijke uni in dezelfde kleur.

Kj

SIGNATURE



Ficaria greenish

Ficaria shows free work from photographer Kreetta Järvenpää (born in 1974, Finland). This art was made in the spring, which is seen in the choice of yellow and orange garden flowers like a daffodil in full bloom. There's other delicate flowers too, like bell-shaped hanging frittalarias and the subtle, playful accent of bright blue forget-me-nots. All these flowers grow in her own garden too, therefore capturing a very personal impression in this image. Usually, Kreetta takes photos of voluminous flower arrangements, contrary to this airy scene, bringing out the fresh, sunny spring feeling even more strongly.

Ficaria zeigt freie Arbeiten der Fotografin Kreetta Järvenpää (geboren 1974, Finnland). Diese Arbeit entstand im Frühling, was sich in der Wahl von gelben und orangefarbenen Gartenblumen wie einer Narzisse in voller Blüte und zarteren Blumen wie glockenförmig hängenden Frittalarias und dem subtil verspielten Akzent von hellblauen "Vergissmeinnicht"-Blumen zeigt. Alles Blumen, die auch in ihrem eigenen Garten wachsen, was diesem Bild eine sehr persönliche Note verleiht. Während Kreetta normalerweise eher ausladende Blumenarrangements fotografiert, ist diese Szene sehr luftig und bringt das frische, sonnige Frühlingsgefühl noch besser zur Geltung.

Ficaria toont vrij werk van fotografe Kreetta Järvenpää (geboren in 1974, Finland). Dit werk is gemaakt in het voorjaar, wat te zien is aan de keuze van gele en oranje tuinbloemen zoals een Narcis in volle bloei, en meer delicate bloemen zoals belvormige hangende Frittalaria's en het subtiel speelse accent van fel blauwe 'vergeet me nietjes'. Allemaal bloemen die ook in haar eigen tuin groeien, en daarmee een heel persoonlijk gevoel leggen in dit beeld. Waar Kreetta normaal gezien veelal volumieuze bloemstukken fotografeert, is dit tafereel heel luchtig, wat het fris zonnige voorjaarsgevoel nog beter naar voren laat komen.

SIGNATURE



Tesse greenish

Tesse is a decorative ornamental print. Ornaments, or 'versierselen' as they were known in the 17th-century Netherlands, were commonly used at the time. Ornamental shapes were characterised by stylisation, symmetry or the repetition of a motif, all three of which are clearly visible in this Tesse print. The original of this print is an etching dating back to 1817 from the Rijksmuseum in Amsterdam archives.

Tesse ist ein dekorativer Ornamentdruck. Ornamente, oder wie im Niederländischen des 17. Jahrhunderts, "Versierselen", waren zu dieser Zeit weit verbreitet. Ornamente zeichnen sich durch Stilisierung, Symmetrie oder Wiederholung eines Motivs aus. Bei dem Tesse-Dessin sind diese drei Merkmale deutlich erkennbar. Das Original dieses Prints ist eine Radierung aus 1817 aus dem Archiv des Rijksmuseums.

De Tesse is een decoratieve ornamentale print. Ornamenten, of, zoals in het 17de eeuwse Nederlands, 'versierselen', werden toentertijd veelvuldig toegepast. Vormen van het ornament worden gekenmerkt door stilering, symmetrie of herhaling van een motief. Voor de print Tesse zijn deze drie kenmerken duidelijk zichtbaar. Het origineel van deze print is een ets uit 1817 uit het archief van het Rijksmuseum in Amsterdam.

SIGNATURE



Levine vanilla

The Levine shows subtly winding branches adorned with flowers, leaves and fruits. A (hand)blockprint from the Rijksmuseum in Amsterdam, made between 1861-1939 in Italy. By executing this print in an updated colour scheme of diffuse tones, it beautifully matches the collection's colour philosophy.

Das Dessin Levine zeigt subtil schwingende Zweige mit Blüten, Blättern und Früchten. Ein (Hand-) Blockdruck aus dem Rijksmuseum in Amsterdam, der zwischen 1861 und 1939 in Italien hergestellt wurde. Durch die Verwendung moderner Farbtöne passt der Druck wunderbar zur Farbphilosophie der Kollektion.

De levine toont subtiel slingerende takjes met bloemen, bladeren en vruchten. Een (hand) blokprint afkomstig uit het Rijksmuseum in Amsterdam, gemaakt tussen 1861-1939 in Italië. Door deze print uit te voeren in een vernieuwde kleurstelling van diffuse tonen past deze prachtig in de kleurfilosofie van de collectie.

SIGNATURE



Annebella vanilla

A romantically widely placed floral print on a calming plain background. In the Annebella, you will find various flowers such as a striped camellia, lilies, Japanese peony, cherry blossom, Japanese iris, chrysanthemum, and lotus flower. These flowers are sourced from the Rijksmuseum in Amsterdam. They are coloured photographs taken by the Japanese photographer Kazumasa Ogawa, around 1890. The generous placement on a soft, slightly contrasting background creates a captivating print.

Ein romantischer, luftig platzierter Blumendruck auf beruhigendem, unifarbigen Hintergrund. Annebella zeigt verschiedene Blumen wie eine gestreifte Kamelie, Lilien, japanische Pfingstrose, Kirschblüte, japanische Schwertlilie, Chrysantheme und Lotusblume. Diese Blumen stammen aus dem Rijksmuseum. Es handelt sich um Farbfotografien des japanischen Fotografen Kazumasa Ogawa aus der Zeit um 1890. Durch die großzügige Platzierung auf einem weichen, leicht kontrastierenden Hintergrund entsteht ein sehr ansprechender Druck.

Een romantisch luchtige geplaatste bloemenprint op een rustgevende uni achtergrond. In de Annebella vind je verschillende bloemen zoals een gestreepte camelia, lelies, Japanse pioenroos, kersenbloesem, Japanse iris, chrysant en lotus bloem. Deze bloemen zijn afkomstig uit het Rijksmuseum. Het zijn ingekleurde foto's gemaakt door de Japanse fotograaf Kazumasa Ogawa, rond 1890. Door de ruime plaatsing op een zachte, licht contrasterende achtergrond ontstaat er een heel innemende print.

SIGNATURE



Noleste greenish

With Noleste you'll get lost in the exquisite details of its richly filled floral canvas. The print showcases various dainty flowers such as a striped camellia, lilies, Japanese peony, cherry blossom, Japanese iris, chrysanthemum and lotus flower. These flowers are sourced from the Rijksmuseum in Amsterdam. They are coloured photographs taken by Japanese photographer Kazumasa Ogawa, around 1890. The use of colour gives the design a slightly vintage look.

Mit Noleste verlieren Sie sich in den exquisiten Details des reich gefüllten Blumenbildes, das verschiedene zierliche Blumen wie eine gestreifte Kamelie, Lilien, japanische Pfingstrose, Kirschblüte, japanische Iris, Chrysantheme und Lotusblume zeigt. Diese Blumen stammen aus dem Rijksmuseum in Amsterdam. Es handelt sich um Farbfotografien des japanischen Fotografen Kazumasa Ogawa aus der Zeit um 1890. Die Farbwahl verleiht dem Dessin einen leichten Vintage-Look.

De Noleste laat je verdwalen in de prachtige details van het rijk gevulde bloemen canvas. Op de print prijken verschillende sierlijke bloemen zoals een gestreepte camelia, lelies, Japanse pioenroos, kersenbloesem, Japanse iris, chrysanthe en een lotus bloem. Deze bloemen zijn afkomstig uit het Rijksmuseum in Amsterdam. Het zijn ingekleurde foto's gemaakt door de Japanse fotograaf Kazumasa Ogawa, rond 1890. Door het kleurgebruik oogt subtiel vintage.

SIGNATURE



Yule vanilla

Yule is covered with a sunflower print that is repeated across the canvas. These sunflowers stem from a 1688 engraving from the Rijksmuseum in Amsterdam and are made up of countless fine lines that add extra depth to the flowers. The repetitive placement of the sunflower gives this 17th Century engraving a modern twist.

Das Yule-Dessin ist mit einem Druck von Sonnenblumen geschmückt, die sich auf der Leinwand wiederholen. Diese Sonnenblumen stammen von einer Gravur aus dem Rijksmuseum in Amsterdam aus dem Jahr 1688 und enthalten zahlreiche feine Linien, die der Blume zusätzliche Tiefe verleihen. Die wiederholte Platzierung der Sonnenblume gibt der Gravur aus dem 17. Jahrhundert eine moderne Wendung.

De Yule is bedolven onder een print van zonnebloemen die zich herhalen over het canvas. Deze zonnebloemen zijn afkomstig van een gravure uit 1688 uit het Rijksmuseum in Amsterdam en bevatten een tal van fijne lijntjes die extra diepte geeft aan de bloem. De repetatieve plaatsing van de zonnebloem zorgt voor een moderne twist van de 17e eeuwse gravure.

SIGNATURE



Floor oyster

Floor is a version of our bestselling print, Fleur, but designed using tonal colours, resulting in a beautifully subtle and classic motif with a contemporary look. Floor owes its allure to a quiet simplicity with a ton-sur-ton print that retains the depth of this iconic flower print.

Das Dessin Floor ist eine Abwandlung unseres Bestsellers Fleur, jedoch in tonalen Farben gehalten. So erhalten Sie einen schönen, subtilen und klassischen Druck mit einem modernen Look. Floor besticht durch eine ruhige Schlichtheit, denn der Druck ist Ton in Ton angelegt, ohne die Tiefe des ikonischen Blumendrucks zu verlieren.

De Floor is een afgeleide van onze bestseller-print de Fleur, maar dan uitgevoerd in tonale kleuren. Hierdoor krijg je een prachtige, subtiel en klassieke print met een eigentijdse look. De Floor dankt haar allure aan stille eenvoud doordat de print ton-sur-ton is opgezet, zonder de diepte van de iconische bloemenprint te verliezen.

SIGNATURE



Karli mineral green

The Karli print is a design with an iconic floral print, as you would expect from ESSENZA. The designers have created a composition of flowers from different paintings from the Old Masters archive. The print showcases countless, finely-painted flowers from all seasons, most of which were relatively rare during the time of the Old Masters. This print features a rich and varied colour palette, making it a source of endless fascination.

Der Karli-Print ist ein Dessin mit einem ikonischen Blumenmuster, wie man ihn von ESSENZA erwarten kann. Die Designer haben eine Komposition von Blumen aus verschiedenen Gemälden aus dem Archiv der Alten Meister geschaffen. Mit feinem Pinsel sind zahlreiche Blumenarten aus verschiedenen Jahreszeiten zu sehen, von denen die meisten zu ihrer Zeit etwas ganz Besonderes waren. Dieser Print zeigt eine reiche Farbpalette, die Sie endlos anschauen können.

De Karli print is een design met een iconische bloemenprint zoals je van ESSENZA kan verwachten. De ontwerpers hebben een compositie gemaakt van bloemen van verschillende schilderijen uit het archief van de oude meesters. Met fijn penseel zijn talrijke soorten bloemen te zien uit verschillende jaargetijden, waarvan de meesten in die tijd bijzonder waren. Deze print heeft een rijke hoeveelheid aan kleuren waar je eindeloos naar kan blijven staren.

SEASONAL



Dirce vanilla

The inspiration for Dirce comes from drawing 'Branch with purple lilacs' by Maria Geertruida Barbiers-Snabilié (1786-1838) from the archives of the Rijksmuseum. A lilac tree blooms in spring time and spreads a characteristic spring scent. Barbiers-Snabilié captured this perfectly by drawing the lilacs with a brush in watercolour. The elegant pattern of the Dirce is created by placing this drawing in repeat so the branches subtly fall over each other, over and over again.

Dirce is geïnspireerd op de tekening 'Tak met paarse seringen', van Maria Geertruida Barbiers-Snabilié (1786-1838) uit het archief van het Rijksmuseum. Een sering bloeit in het voorjaar en verspreid een kenmerkende lente geur. Barbiers-Snabilié heeft dit prachtig weten te vangen door de seringen te tekenen met penseel in waterverf. Door het werk in repeat te plaatsen waarbij de takken herhaaldelijk en subtiel over elkaar heen vallen ontstaat het sierlijke patroon van de Dirce.

Dirce is geïnspireerd op de tekening 'Tak met paarse seringen', van Maria Geertruida Barbiers-Snabilié (1786-1838) uit het archief van het Rijksmuseum. Een sering bloeit in het voorjaar en verspreid een kenmerkende lente geur. Barbiers-Snabilié heeft dit prachtig weten te vangen door de seringen te tekenen met penseel in waterverf. Door het werk in repeat te plaatsen waarbij de takken herhaaldelijk en subtiel over elkaar heen vallen ontstaat het sierlijke patroon van de Dirce.

SEASONAL



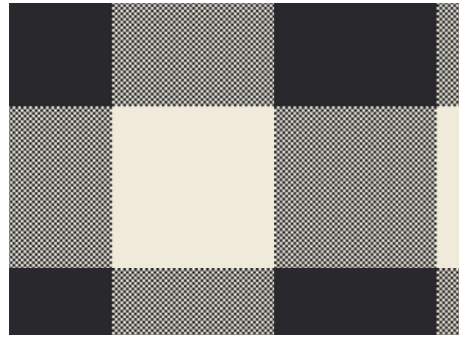
Imara anthracite

The Imara showcases a hand-painted silhouette print featuring abstracted Clematises. The Clematis is a climbing plant that comes in many variations: from small subtle flowers to very large colourful ones. The Imara print incorporates all these different types of Clematis and reduces them to the strength of their shapes. By making this print in contrasting colours, it radiates both tranquillity and valiant energy.

Imara zeigt einen handgemalten Scherenschnitt-Druck mit abstrahierten Clematisblüten. Die Clematis ist eine Kletterpflanze, die es in vielen Variationen gibt: von kleinen, zarten Blüten bis hin zu sehr großen, bunten Blüten. Der Imara-Druck nimmt all die verschiedenen Arten von Clematis auf und reduziert sie auf die Stärke ihrer Formen. Durch die kontrastreichen Farben strahlt dieser Druck sowohl Ruhe als auch eine kraftvolle Energie aus.

De Imara toont een handgeschilderde silhouet print van geabstraheerde Clematissen. De Clematis is een klimplant die in heel veel variaties voorkomt: van kleine subtiel bloemetjes tot hele grote kleurrijke bloemen. In de Imara print zitten al deze verschillende soorten Clematissen verwerkt en zijn ze terugbracht tot de kracht van de vorm van deze prachtige bloemen. Door deze print in contrasterende kleuren te maken straalt hij zowel rust als energie uit.

SEASONAL



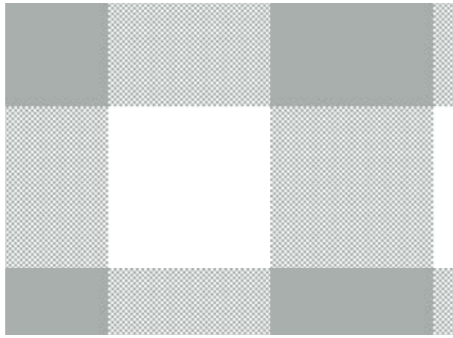
Chess anthracite

The Chess shows a modern interpretation of the classic Vichy check as the pattern is placed in a larger scale. When you look at the print up close, you'll discover a subtle play of contrasts; part of the check is made up of an enormous amount of tiny blocks. The use of two main colours give the Chess rest and elegance.

Das Dessin Chess zeigt eine moderne Interpretation des klassischen Vichy-Karos, indem es das Muster in einen größeren Maßstab setzt. Ein genauerer Blick auf den Print offenbart ein subtiles Spiel mit Kontrasten; tatsächlich besteht ein Teil des Karos aus einer riesigen Menge kleiner Würfel. Die Verwendung von zwei Hauptfarben verleiht dem Dessin Ruhe und Eleganz.

De Chess toont een modern interpretatie van de klassieke Vichy-ruit doordat het patroon in een grotere schaal is geplaatst. Wanneer je de print van dichtbij bekijkt ontdek je een subtiel spel van contrasten; een deel van de ruit is namelijk opgebouwd uit een enorme hoeveelheid kleine blokjes. Het gebruik van twee hoofdkleuren geeft de Chess rust en elegantie.

SEASONAL



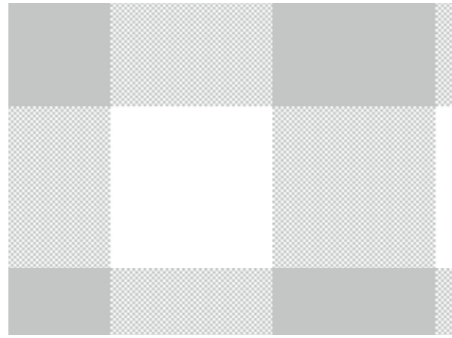
Chess dusty green

The Chess shows a modern interpretation of the classic Vichy check as the pattern is placed in a larger scale. When you look at the print up close, you'll discover a subtle play of contrasts; part of the check is made up of an enormous amount of tiny blocks. The use of two main colours give the Chess rest and elegance.

Das Dessin Chess zeigt eine moderne Interpretation des klassischen Vichy-Karos, indem es das Muster in einen größeren Maßstab setzt. Ein genauerer Blick auf den Print offenbart ein subtiles Spiel mit Kontrasten; tatsächlich besteht ein Teil des Karos aus einer riesigen Menge kleiner Würfel. Die Verwendung von zwei Hauptfarben verleiht dem Dessin Ruhe und Eleganz.

De Chess toont een modern interpretatie van de klassieke Vichy-ruit doordat het patroon in een grotere schaal is geplaatst. Wanneer je de print van dichtbij bekijkt ontdek je een subtiel spel van contrasten; een deel van de ruit is namelijk opgebouwd uit een enorme hoeveelheid kleine blokjes. Het gebruik van twee hoofdkleuren geeft de Chess rust en elegantie.

SEASONAL



Chess grey

The Chess shows a modern interpretation of the classic Vichy check as the pattern is placed in a larger scale. When you look at the print up close, you'll discover a subtle play of contrasts; part of the check is made up of an enormous amount of tiny blocks. The use of two main colours give the Chess rest and elegance.

Das Dessin Chess zeigt eine moderne Interpretation des klassischen Vichy-Karos, indem es das Muster in einen größeren Maßstab setzt. Ein genauerer Blick auf den Print offenbart ein subtiles Spiel mit Kontrasten; tatsächlich besteht ein Teil des Karos aus einer riesigen Menge kleiner Würfel. Die Verwendung von zwei Hauptfarben verleiht dem Dessin Ruhe und Eleganz.

De Chess toont een modern interpretatie van de klassieke Vichy-ruit doordat het patroon in een grotere schaal is geplaatst. Wanneer je de print van dichtbij bekijkt ontdek je een subtiel spel van contrasten; een deel van de ruit is namelijk opgebouwd uit een enorme hoeveelheid kleine blokjes. Het gebruik van twee hoofdkleuren geeft de Chess rust en elegantie.



Duvet cover
Cushion
Fitted sheet

CHESS anthracite
IMARA anthracite
oyster



Kreetta in her studio in Helsinki

For ESSENZA's 'Gallery of Nature' collection, we are collaborating with Finnish artist Kreetta Järvenpää for the first time. Kreetta specialises in creating floral art and floral photography, which results in timeless floral fantasies inspired by the Old Masters.

As the daughter of a flower and plant lover, Kreetta was determined to never have houseplants or a garden herself; she thought it was too much work. However, the sudden passing of her mother in 2016 gave her life a clear new direction. From that moment onwards, flowers actually became her subject and created a personal connection in her work.

'Flowers are my material; they are expressive and shaped by time. Everything must be perfect before taking the final shot and I want that my photography doesn't look like a photograph at all. I create an escape window from reality with my camera – a floral fantasy'
– Kreetta Järvenpää.

Kreetta's works are characterised by a dark, black background and subtle lighting that bring out the floral arrangements beautifully. It creates a certain drama that provides an entrance to a fantasy, so to speak. *'Reality and time have no meaning to me. I find my meditative space through the beauty of changing and decaying flowers, and in my works they last forever'* says Kreetta. Her style draws inspiration from 17th-century art, especially the work of Dutch Baroque painter Rachel Ruysch, who was celebrated for her flower still lifes.

'I love working with flowers in full bloom, or when they are just fading out. When a flower, like a tulip, is fully open you can really see its face' Kreetta explains. Therefore, creating the right photo can sometimes take up to 3 days. Each flower has a different life cycle, which means they have to be preserved in different ways to then be photographed together. Kreetta tries to follow the ecological process as much as possible and therefore also mainly uses local, sustainably grown flowers that are in bloom at that specific moment: *'A flower is perfect at a certain moment, and sometimes it's already in its out-of-bloom state. Accepting that there is always movement makes a flower perfect at any moment.'*

For ESSENZA's Gallery of Nature collection, we chose two flower still lifes from Kreetta's free work, in which she experimented with coloured backgrounds. These floral still lifes beautifully depict fresh-flowering spring and late summer blooms, perfectly complementing this nature-inspired collection. Kreetta about the collaboration with ESSENZA: *'What caught my eye when discovering the ESSENZA brand was a floral design with a burnt yellow background. I love the cosy style of the brand. It's exciting to see how my work comes to life in a completely different setting.'*

Für die "Gallery of Nature"-Kollektion von ESSENZA arbeiten wir zum ersten Mal mit der finnischen Künstlerin Kreetta Järvenpää zusammen. Kreetta hat sich darauf spezialisiert, Blumenkunst zu kreieren und zu fotografieren. Das Ergebnis sind zeitlose, vom Goldenen Zeitalter inspirierte Blumenfantasien.

Als Tochter eines Blumen- und Pflanzenliebhabers hatte sich Kreetta geschworen, niemals Zimmerpflanzen oder einen Garten zu haben, zu viel Arbeit, dachte sie. Doch der plötzliche Tod ihrer Mutter im Jahr 2016 gab ihrem Leben eine ganz neue Richtung. Von diesem Moment an wurde die Blume zu ihrem Thema und stellt eine sehr persönliche Verbindung in ihrer Arbeit her.

"Blumen sind meine Materialien; sie sind ausdrucksstark und von der Zeit geformt. Alles muss perfekt sein, bevor ich das endgültige Foto mache, und ich möchte, dass meine Fotografie überhaupt nicht wie ein Foto aussieht. Ich schaffe mit meiner Kamera ein Fluchtfenster aus der Realität - eine florale Fantasie" – Kreetta Järvenpää.

Kreettas Werke zeichnen sich durch einen dunklen, schwarzen Hintergrund und subtiles Licht aus, das die Blumenarrangements wunderbar zur Geltung bringt. Es entsteht eine gewisse Dramatik, die sozusagen den Einstieg in eine Fantasie darstellt. *'Realität und Zeit haben für mich keine Bedeutung. Ich finde meinen meditativen Raum durch die Schönheit der sich verändernden und verblühenden Blumen, und in meinen Werken bleiben sie ewig bestehen'*, sagt Kreetta.

Ihr Stil ist von der Kunst des 17. Jahrhunderts inspiriert, insbesondere von den Werken der niederländischen Barockmalerin Rachel Ruysch, die für ihre Blumenstillleben berühmt war.

'Ich liebe es, mit Blumen zu arbeiten, die in voller Blüte stehen oder gerade verblühen. Wenn eine Blume, wie z. B. eine Tulpe, vollständig geöffnet ist, kann man ihr Gesicht wirklich sehen', erklärt Kreetta. Deshalb kann es manchmal bis zu drei Tage dauern, bis das richtige Foto entsteht. Jede Blume hat einen anderen Lebenszyklus, was bedeutet, dass sie auf unterschiedliche Weise konserviert werden muss, um dann gemeinsam fotografiert zu werden. Kreetta versucht, dem ökologischen Prozess so weit wie möglich zu folgen und verwendet daher auch hauptsächlich lokale, nachhaltig angebaute Blumen, die gerade blühen: *"Eine Blume ist zu einem bestimmten Zeitpunkt perfekt, und manchmal ist sie zu diesem Zeitpunkt bereits verblüht. Wenn man akzeptiert, dass es immer Bewegung gibt, ist eine Blume zu jedem Zeitpunkt perfekt."*

Für die ESSENZA-Kollektion Gallery of Nature haben wir zwei Blumenstillleben aus Kreettas freien Arbeiten ausgewählt, bei denen sie mit farbigen Hintergründen experimentiert hat. Diese Blumenstillleben zeigen wunderschön frisch blühende Frühlings- und Spätsommerblumen, die perfekt zu dieser von der Natur inspirierten Kollektion passen. Kreetta über die Zusammenarbeit mit ESSENZA: *"Als ich die Marke ESSENZA entdeckte, fiel mir ein florales Design mit einem feuergelben Hintergrund ins Auge. Ich liebe den gemütlichen Stil der Marke. Es ist aufregend zu sehen, wie meine Arbeit in einer völlig anderen Umgebung zum Leben erwacht."*

Voor de 'Gallery of Nature' collectie van ESSENZA werken we voor het eerst samen met de Finse kunstenaar Kreetta Järvenpää. Kreetta specialiseert zich in het creëren van bloemkunst en bloemfotografie, wat resulteert in tijdloze bloemfantasieën die zijn geïnspireerd door de Oude Meesters.

Als de dochter van een bloemen en planten liefhebber beloofde Kreetta zichzelf nooit kamerplanten of een tuin te zullen hebben, te veel werk vond ze. Het plotselinge overlijden van haar moeder in 2016 zorgde echter voor een duidelijke nieuwe richting in haar leven. De bloem werd vanaf dit moment juist haar onderwerp en zorgde voor een heel persoonlijke connectie in haar werk.

'Bloemen zijn mijn materiaal; ze zijn expressief en gevormd door de tijd. Alles moet perfect zijn voordat de uiteindelijke foto wordt genomen en ik wil dat mijn fotografie er helemaal niet uitziet als een foto. Ik creëer een ontsnapping uit de werkelijkheid met mijn camera. A floral fantasy' – Kreetta Järvenpää.

De werken van Kreetta laten zich kenmerken door een donkere, zwarte achtergrond en subtiele lichtinval die de bloemstukken prachtig naar voren brengen. Het zorgt voor een zekere dramatiek die als het ware ingang biedt tot een fantasie. *'Realiteit en tijd hebben voor mij geen betekenis. Ik vind mijn meditatieve ruimte in de schoonheid van veranderende en uitbloeiende bloemen, en in mijn werken blijven ze eeuwig bestaan'*. vertelt Kreetta. Haar stijl laat zich inspireren door 17e eeuwse kunst, met name door het werk van de Hollandse barok schilder Rachel Ruysch die werd geroemd om haar bloemstillevens.



The original artwork of the Ficara design

'Ik hou ervan om te werken met bloemen in full bloom, of wanneer ze juist aan het uitbloeien zijn. Wanneer een bloem, zoals een tulpe, helemaal open is zie je echt haar gezicht' legt Kreetta uit. Het creëren van de juiste foto kan daarom soms tot wel 3 dagen duren. Elke bloem heeft een andere levenscyclus, wat betekent dat ze op verschillende manieren bewaard moeten worden om vervolgens samen gefotografeerd te kunnen worden. Kreetta probeert zoveel mogelijk het ecologische proces te volgen en maakt daarom ook vooral gebruik van lokale, duurzaam geteelde bloemen die op dat moment in bloei zijn: *'Een bloem is op een bepaald moment perfect, en soms is het al in uitbloeiende staat. Accepteren dat er altijd beweging is, maakt dat een bloem op elk moment perfect is.'*

Voor de Gallery of Nature collectie van ESSENZA hebben we twee bloemstillevens gekozen uit het vrije werk van Kreetta, waarin ze experimenteert met gekleurde achtergronden. Deze werken laten prachtig het fris bloeiende voorjaar en de late zomerbloei uitbeelden en sluiten daarmee perfect aan bij deze door de natuur geïnspireerde collectie. Kreetta over de samenwerking met ESSENZA: *'Waar mijn oog op viel toen ik het merk ESSENZA ontdekte, was een bloemendessin met een warme, gebrande gele achtergrond. Ik hou van de knusse stijl van het merk. Het is geweldig om te zien hoe mijn werk tot leven komt in een compleet andere setting.'*

CHAPTER 1:

RESILIENT SOUL





Plum wine

Infinite blue

Spot on pink

Fig purple

Zen blue

Violet

Cobalt blue

Illusion blue

Woodrose

Darkest blue

Mauve

Azure blue

Orange bloom

Navy blue

White

CHAPTER 1:

RESILIENT SOUL

Rich, vibrant blue tones evoke a profound sense of tranquility, inviting you to embrace its power. Like a gentle breeze, it caresses our spirits and provides a fresh outlook for the future. The Leila print demonstrates how various elements from the Old Masters acquire a contemporary look by using tone-on-tone colours. This detailed print is executed in various shades of blue and soft vanilla. The combination with buttery soft cotton satin and luxurious velvet gives it a modern, classic touch.

Pink tones such as woodrose harmonise with the blue and radiate a vibrant energy that symbolises new possibilities. The Rosemary print sets the tone within the colour palette, featuring a ton sur ton effect in its spot-on pink shade. The late summer hues of orange bloom in the photo still life of Phaea are taking a leading role on this canvas.

Colourful prints such as the Annebelle in cobalt blue and the Isabella in Azur blue infuse brightness and a rich history into this theme. While colours like Vanilla, Zen Blue, Ice Blue and Illusion blue have a serene character, woodrose and spot on pink add a feminine and elegant touch.

Satte, levendige Blautöne rufen ein tiefes Gefühl der Ruhe hervor und laden Sie ein, diese Kraft zu genießen. Wie eine sanfte Brise streichelt es unseren Geist und sorgt für einen frischen Ausblick in die Zukunft. Der Leila-Druck zeigt, wie verschiedene Elemente der Alten Meister durch moderne Silhouetten ein zeitgenössisches Aussehen erhalten. In verschiedenen Blautönen ausgeführt, erinnert dieser komplexe Druck in Kombination mit dem Vanilleton an zartes Porzellan und ergibt außergewöhnlich elegante Stücke.

Rosatöne wie Woodrose harmonieren mit dem Blau und strahlen eine lebendige Energie aus, die für neue Möglichkeiten steht. Der Rosemary-Druck gibt den Ton innerhalb der Farbpalette an und strahlt in einer Ton-in-Ton Variante in Spot on Pink. Das spätsommerliche Orange Bloom steht im Mittelpunkt des Fotostillicens auf der Phaea.

Farbenfrohe Drucke wie Annebelle in Zen Blue und Isabella in Azur Blue verleihen diesem Thema Klarheit und eine reiche Geschichte. Während Farben wie Vanilla, Zen Blue, Ice Blue und Illusion Blue einen sehr ruhigen Charakter haben, verleihen Woodrose und Spot on Pink einen femininen und eleganten Touch.

Rijke, heldere blauwtonen roepen een diep gevoel van kalmte op en nodigen uit om haar kracht te omarmen. Als een zacht briesje streelt het onze geest en geeft het een frisse blik vooruit. De Leila print laat zien hoe verschillende elementen van de oude meesters een hedendaagse look krijgen door ton-sur-ton kleurgebruik. Deze gedetailleerde print is uitgevoerd in diverse blauwtonen met zacht vanilla wat in combinatie met boterzacht katoen satijn en luxueus velours een modern klassieke touch geeft.

Roze tonen zoals woodrose harmoniseren met het blauw en stralen een levendige energie uit, die staat voor nieuwe mogelijkheden. De Rosemary print in een ton-sur-ton van spot on pink zet de toon binnen het kleuren palet. De nazomerse orange bloom tonen in het fotostillevens van de Phaea pakken de hoofdrol op dit canvas.

Kleurrijke prints zoals de Annebelle in zen blue en de Isabella in Azur blue brengen dit thema helderheid en een rijke historie. Terwijl kleuren zoals Vanilla, Zen Blue, Ice Blue en Illusion blue een heel rustig karakter hebben, geven Woodrose en Spot on pink een vrouwelijke en elegante touch.



Duvet cover
Fitted sheet
Carpet

LEILA vanilla
oyster
LEILA vanilla

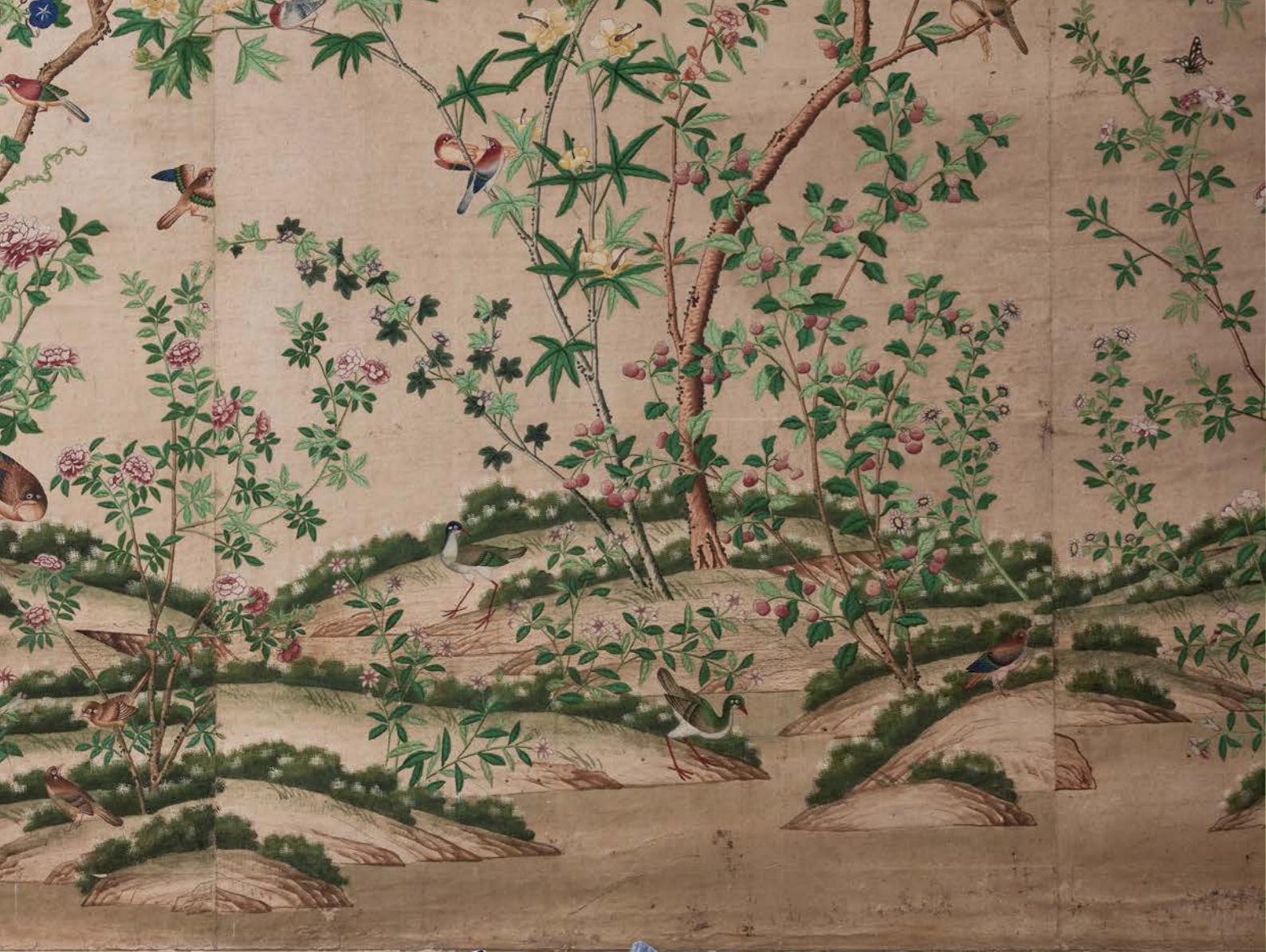
Leila vanilla

100% organic cotton satin, GOTS certified, 300TC, with piping
100% biologisch katoen satijn, GOTS gecertificeerd, 300TC, met piping
100% Bio-Baumwollsatin, GOTS-zertifiziert, 300TC, mit Paspel

The Leila print is the modern-day sister of the Karli print, the type of iconic floral print you would expect from ESSENZA. The designers have created a composition of flowers from different paintings from the Dutch Masters archive. The print showcases countless, finely-painted flowers from all seasons, most of which were relatively rare during the time of the Dutch Masters. The use of three ton-sur-ton colours gives this print a modern yet classic feel. Turn Leila over to reveal the solid background colour, balancing out the entire cover. As a finishing touch, the edges of this duvet cover and pillowcases are trimmed with a piping.

The fine threads, in combination with the sateen weave and the high 300-thread count, gives the duvet cover extra sheen and a delightful feel. Shiny, smooth and strong organic GOTS-certified cotton sateen. The international GOTS certificate guarantees the use of organically grown cotton and ensures that cotton production occurs in an environmentally friendly and socially responsible manner. In other words, better for your skin, the planet, and the employees who make this fabric. This fabric creates a velvety soft duvet cover that will last many years and is guaranteed to provide a good night's rest.

Take a look at the mix and match (p. 66) for the complete combination with accessories.



Duvet cover
Duvet cover

LEILA vanilla
MINTÉ ice blue



Duvet cover
Nightdress
Trousers

MINTÉ ice blue
BLAIR LEILA vanilla
MARE LEILA vanilla

Yfke cobalt blue

100% organic cotton satin, GOTS certified, 300TC, with piping
100% biologisch katoen satijn, GOTS gecertificeerd, 300TC, met piping
100% Bio-Baumwollsatin, GOTS-zertifiziert, 300TC, mit Paspel



Duvet cover YFKE cobalt blue
Pouf YFKE cobalt blue
Carpet EEILA vanilla

The Yfke print is based on an original hand-painted, European block print from the 19th Century that was used to create wall paper. Wall paper started to become popular in the middle of the 18th Century and used to be made from textile waste, also known as rag paper. After applying a base colour, the sheets are printed using wooden blocks with a pattern. Each colour scheme requires a specific block print. When you look close enough at this opulent flower print, you'll see a diamond pattern shining through. This shows that this pattern was used to place this print repeatedly. With this authentic print on your bed you'll imagine yourself in an old manor house with high, richly decorated walls. Turn Yfke over to reveal the solid background colour, balancing out the entire cover. As a finishing touch, the edges of this duvet cover and pillowcases are trimmed with a piping.

The fine threads, in combination with the sateen weave and the high 300-thread count, gives the duvet cover extra sheen and a delightful feel. Shiny, smooth and strong organic GOTS-certified cotton sateen. The international GOTS certificate guarantees the use of organically grown cotton and ensures that cotton production occurs in an environmentally friendly and socially responsible manner. In other words, better for your skin, the planet, and the employees who make this fabric. This fabric creates a velvety soft duvet cover that will last many years and is guaranteed to provide a good night's rest.

Take a look at the mix and match (p. 66) for the complete combination with accessories.



Cushions
Pouf
Carpet

YFKE cobalt blue
YFKE cobalt blue
LEILA vanilla



Minte ice blue

100% cotton satin, enzyme washed, 300TC, with double stitch finish
100% katoen satijn, enzymen wassing, 300TC, met double stitch afwerking
100% Baumwolle Satin, Enzym gewaschen, 300TC, mit Doppelnaht

Duvet cover
Fitted sheet

MINTE ice blue
ice blue

With duvet cover Minte you'll be sure to get a great night's sleep. This premium ESSENZA duvetcover brings peace and atmosphere to the bedroom. It isn't just the various gorgeous uni colours that are simply enchanting, the quality of the fabric is just as amazing. The front and reverse of this duvet cover have the same uni colour. Once you slept under the Minte, you will never go back to something else. The fine yarn combined with the satin weave, the high 300 thread-count and the special enzyme washing give this duvet cover extra shine and make it feel very supple. An incredibly velvety soft duvet cover that is durable and timeless. And did you see the special double stitching around the edges? Whichever colour you'll choose, sweet dreams are guaranteed. A fun tip: mix & match the different pillow cases that are separately available in all the colours.

Take a look at the mix and match (p. 66) for the complete combination with accessories.

Minte woodrose

100% cotton satin, enzyme washed, 300TC, with double stitch finish
100% katoen satijn, enzymen wassing, 300TC, met double stitch afwerking
100% Baumwolle Satin, Enzym gewaschen, 300TC, mit Doppelnaht

With duvet cover Minte you'll be sure to get a great night's sleep. This premium ESSENZA duvetcover brings peace and atmosphere to the bedroom. It isn't just the various gorgeous uni colours that are simply enchanting, the quality of the fabric is just as amazing. The front and reverse of this duvet cover have the same uni colour. Once you slept under the Minte, you will never go back to something else. The fine yarn combined with the satin weave, the high 300 thread-count and the special enzyme washing give this duvet cover extra shine and make it feel very supple. An incredibly velvety soft duvet cover that is durable and timeless. And did you see the special double stitching around the edges? Whichever colour you'll choose, sweet dreams are guaranteed. A fun tip: mix & match the different pillow cases that are separately available in all the colours.

Take a look at the mix and match (p. 66) for the complete combination with accessories.

Duvet cover
Fitted sheet

MINTE woodrose
woodrose

Isabella azur blue

100% organic cotton satin, GOTS certified, with piping
100% biologisch katoen satijn, GOTS gecertificeerd, met piping
100% Bio-Baumwollsatin, GOTS-zertifiziert, mit Paspel

Duvet cover Isabella contains the lush floral print Isabelle showing richly placed flowers taken from paintings by the Old Masters from the Rijksmuseum in Amsterdam. This voluminous floral print exudes strength and richness and symbolises the blossoming of life. Turn Isabella over to reveal the solid background colour, balancing out the entire cover. As a finishing touch, the edges of this duvet cover and pillowcases are trimmed with piping.

This duvet cover, made from 100% organic cotton, has the lovely characteristics that cotton has: it's breathable and absorbs moisture. The international GOTS certificate guarantees the use of organically grown cotton, yet also ensures that production takes place in an environmentally and socially responsible manner. That's better for your skin, better for the earth and also better for the employees. Besides, an organic cotton satin duvet cover feels much softer and smoother than a 'conventional' cotton duvet cover due to the special satin weave which gives a soft sheen to the fabric. This doesn't just feel luxurious, it looks luxurious too.

Take a look at the mix and match (p. 68) for the complete combination with accessories.

Duvet cover
Fitted sheet
Carpet

ISABELLA azur blue
purple breeze
FLORA nightblue



Duvet cover
Fitted sheet
ISABELLA azur blue
purple breeze



Kimono
SARAI ISABELLA azur blue

Tesse zen blue

100% cotton satin, with piping
100% katoen satijn, met piping
100% Baumwolle Satin, mit Paspel



Duvet cover
Carpet

TESSE zen blue
LEILA vanilla

Tesse is a decorative ornamental print. Ornaments, or 'versierselen' as they were known in the 17th-century Netherlands, were commonly used at the time. Ornamental shapes were characterised by stylisation, symmetry or the repetition of a motif, all three of which are clearly visible in this Tesse print. The original of this print is an etching dating back to 1817 from the Rijksmuseum archives in Amsterdam. On this duvet cover, the Tesse design is positioned as a panel print with side panels in a different colour. As a finishing touch, the edges of this duvet cover and pillowcases are trimmed with piping. Turn the Tesse duvet over to discover a subtle two-tone wavy pattern.

Cotton sateen is, without a doubt, our favourite fabric for bedding. Cotton sateen is made from 100% natural cotton and therefore has the same characteristics as other cotton fabrics: breathability and moisture-wicking properties. A cotton sateen duvet cover feels much softer and smoother than a 'normal' cotton cover due to the special sateen weave that gives the fabric its sheen. The result is a fabric that looks and feels luxurious.

Take a look at the mix and match (p. 68) for the complete combination with accessories.



Trousers

MARE TESSE zen blue



Duvet cover
Cushion
Fitted sheet

TESSE zen blue
YFKE cobalt blue
ice blue

Annebella zen blue

100% organic cotton satin, GOTS certified

100% biologisch katoen satijn, GOTS gecertificeerd

100% Bio-Baumwollsatin, GOTS-zertifiziert

A romantically widely placed floral print on a calming plain background. In the Annebella, you will find various flowers such as a striped camellia, lilies, Japanese peony, cherry blossom, Japanese iris, chrysanthemum, and lotus flower. These flowers are sourced from the Rijksmuseum in Amsterdam. They are coloured photographs taken by the Japanese photographer Kazumasa Ogawa, around 1890. The generous placement on a soft, slightly contrasting background creates a captivating print. Turn the duvet cover over to balance the picture with a calming, unicoloured side in the same colour.

This duvet cover, made from 100% organic cotton, has the lovely characteristics that cotton has: it's breathable and absorbs moisture. The international GOTS certificate guarantees the use of organically grown cotton, yet also ensures that production takes place in an environmentally and socially responsible manner. That's better for your skin, better for the earth and also better for the employees. Besides, an organic cotton satin duvet cover feels much softer and smoother than a 'conventional' cotton duvet cover due to the special satin weave which gives a soft sheen to the fabric. This doesn't just feel luxurious, it looks luxurious too.

Take a look at the mix and match (p. 68) for the complete combination with accessories.

Duvet cover ANNEBELLA zen blue
Cushion ANNEBELLA zen blue
Cushion NAINA dusty lilac
Cushion DAILAH ice blue
Carpet LEILA vanilla

Rosemary spot on pink

100% cotton satin, with piping
100% katoen satijn, met piping
100% Baumwolle Satin, mit Paspel



Duvet cover ROSEMARY spot on pink
Plaid TEDDY plumwine
Cushions GIGI cherry pink

The Rosemary print is a ton-sur-ton variation on ESSENZA's lush floral print Isabelle. By incorporating a solid colour palette, this design evokes tranquility, while the voluminous flowers on the print exude strength and richness. Turn Rosemary over to reveal the solid background colour, balancing out the entire cover. As a finishing touch, the edges of this duvet cover and pillowcases are trimmed with a piping.

Cotton sateen is, without a doubt, our favourite fabric for bedding. Cotton sateen is made from 100% natural cotton and therefore has the same characteristics as other cotton fabrics: breathability and moisture-wicking properties. A cotton sateen duvet cover feels much softer and smoother than a 'normal' cotton cover due to the special sateen weave that gives the fabric its sheen. The result is a fabric that looks and feels luxurious.

Take a look at the mix and match (p. 68) for the complete combination with accessories.





Phaea woodrose

100% organic cotton satin, GOTS certified

100% biologisch katoen satijn, GOTS gecertificeerd

100% Bio-Baumwollsatin, GOTS-zertifiziert

Phaea is based on free work from photographer Kreetta Järvenpää (born in 1974, Finland) and shows a late summer seasonal flower arrangement. The choice of flowers clearly display the specific season. The photo shows a sustainable selection of 'slow grown' flowers from Finland that would be blooming at that specific time. Kreetta draws inspiration for her work from the life cycle of the flowers, so the right moment for a photo can take up to three days. This work shows gorgeous hues of burnt orange, illustrating the feeling of a warm, late summers' day. During this season, the Finnish sky regularly turns pink, making this a well suiting background colour for Phaea. Turn the duvet cover over to balance the picture with a calming, unicoloured side in the same colour.

This duvet cover, made from 100% organic cotton, has the lovely characteristics that cotton has: it's breathable and absorbs moisture. The international GOTS certificate guarantees the use of organically grown cotton, yet also ensures that production takes place in an environmentally and socially responsible manner. That's better for your skin, better for the earth and also better for the employees. Besides, an organic cotton satin duvet cover feels much softer and smoother than a 'conventional' cotton duvet cover due to the special satin weave which gives a soft sheen to the fabric. This doesn't just feel luxurious, it looks luxurious too.

Take a look at the mix and match (p. 70) for the complete combination with accessories.



Duvet cover PHAEA woodrose
Cushion GIGI cherry pink
Cushion NAINA dusty lilac

Floor illusion blue

100% cotton satin
100% katoen satijn
100% Baumwolle Satin



Duvet cover FLOOR illusion blue
Carpet FLORA nightblue

Floor is a version of our bestselling print, Fleur, but designed using tonal colours, resulting in a beautifully subtle and classic print that instantly gives every bedroom a chic look. Floor owes its allure to a quiet simplicity with a tone-on-tone print that retains the depth of this iconic floral print. This luxurious design is a perfect way to create a classic yet contemporary look with a serene atmosphere in the bedroom. Turn the duvet over to reveal a tranquil solid cover in the same colour.

Cotton sateen is, without a doubt, our favourite fabric for bedding. Cotton sateen is made from 100% natural cotton and therefore has the same characteristics as other cotton fabrics: breathability and moisture-wicking properties. A cotton sateen duvet cover feels much softer and smoother than a 'normal' cotton cover due to the special sateen weave that gives the fabric its sheen. The result is a fabric that looks and feels luxurious.

Take a look at the mix and match (p. 70) for the complete combination with accessories.

Dorena white

100% cotton percale, 200TC

100% katoen perkal, 200TC

100% Baumwolle Perkal, 200TC



Duvet cover
Plaid
Cushion
Cushion
Pouf

DORENA white
RUTH cream
MADS FURRY rose
CIGI pale beach
TEDDY vanilla

A romantically widely placed floral print on a calming plain background. In the Dorena, you will find various flowers such as a striped camellia, lilies, Japanese peony, cherry blossom, Japanese iris, chrysanthemum, and lotus flower. These flowers are sourced from the Rijksmuseum in Amsterdam. They are coloured photographs taken by the Japanese photographer Kazumasa Ogawa, around 1890. The different flowers are placed underneath each other and in rows, which gives this print a modern twist. Turn the duvet cover over to balance the picture with a calming, unicoloured side in the same colour.

Made from 100% cotton percale, which gives this duvet cover a crisp and cool feeling. Our percale bedding is made from high quality, pure cotton and is breathable and moisture absorbent. The fabric has a matte sheen, giving it both a natural and timeless look.

Take a look at the mix and match (p. 70) for the complete combination with accessories.



Kimono
Top

JULA LEILA vanilla
POPPY LEILA vanilla



Nightdress

BLAIR LEILA vanilla

Imara zen blue

100% cotton percale, 200TC

100% katoen perkal, 200TC

100% Baumwolle Perkal, 200TC

The Imara showcases a hand-painted silhouette print featuring abstracted Clematises. The Clematis is a climbing plant that comes in many variations: from small subtle flowers to very large colourful ones. The Imara print incorporates all these different types of Clematis and reduces them to the strength of their shapes. By making this print in contrasting colours, it radiates both tranquillity and valiant energy. Turn duvet cover Imara over and discover the print in negative, giving it a unique and playful look.

Made from 100% cotton percale, which gives this duvet cover a crisp and cool feeling. Our percale bedding is made from high quality, pure cotton and is breathable and moisture absorbent. The fabric has a matte sheen, giving it both a natural and timeless look.

Take a look at the mix and match (p. 70) for the complete combination with accessories.



MIX & MATCH

Each season, we carefully curate collections that are long-lasting in style and match the ongoing collections. The mix & match provides inspiration that matches the campaign images and assists in putting collections together and showcase them in offline and online shopping environments.

Duvet cover ANNEBELLA zen blue
Cushion ANNEBELLA zen blue
Cushion DAILAH ice blue
Cushion NAINA dusty lilac
Fitted sheet ice blue



LEILA vanilla duvet cover set



MINTE ice blue duvet cover set



YFKE cobalt blue pouf



DAILAH ice blue roll cushion



NAINA dusty lilac cushion



RUTH grape plaid/quilt



LEILA vanilla carpet



FITTED SHEETS oyster, iceblue, nightblue



YFKE cobalt blue duvet cover set



MINTE purple breeze duvet cover set



YFKE cobalt blue pouf



DAILAH ice blue roll cushion



NAINA dusty lilac cushion



RUTH grape plaid/quilt



LEILA vanilla carpet



FITTED SHEETS oyster, purple breeze, nightblue



MINTE ice blue duvet cover set



MINTE woodrose duvet cover set



ANNEBELLA zen blue cushion



DAILAH ice blue roll cushion



ANNEBELLA zen blue cushion



RUTH cream plaid/quilt



LEILA vanilla carpet



FITTED SHEETS oyster, ice blue, woodrose



MINTE woodrose duvet cover set



MINTE purple breeze duvet cover set



NAINA dusty lilac cushion



GIGI cherry pink cushion



TEDDY plumwine plaid



RUTH grape plaid/quilt



RUTH cream plaid/quilt



FITTED SHEETS oyster, purple breeze, woodrose



ISABELLA azur blue duvet cover set



MINTE purple breeze duvet cover set



NAINA denim cushion



GIGI cherry pink cushion



NAINA dusty lilac cushion



RUTH grape plaid/quilt



FLOOR nightblue carpet



FITTED SHEETS oyster, purple breeze, iceblue



TESSE zen blue duvet cover set



YFKE cobalt blue duvet cover set



YFKE cobalt blue pouf



DAILAH ice blue roll cushion



YFKE cobalt blue cushion



YFKE cobalt blue cushion



LEILA vanilla carpet



FITTED SHEETS grey, purple breeze, iceblue



ANNEBELLA zen blue duvet cover set



MINTE woodrose duvet cover set



NAINA dusty lilac cushion



DAILAH ice blue roll cushion



ANNEBELLA zen blue cushion



ANNEBELLA zen blue cushion



RUTH grape plaid/quilt



FITTED SHEETS oyster, ice blue, woodrose



ROSEMARY spot on pink duvet cover set



MINTE woodrose duvet cover set



GIGI cherry pink cushion



NAINA dusty lilac cushion



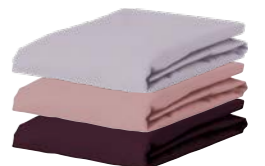
TEDDY plumwine plaid



RUTH grape plaid/quilt



RUTH cream plaid/quilt



FITTED SHEETS purple breeze, woodrose, burgundy



PHAEA woodrose duvet cover set



MINTE woodrose duvet cover set



NAINA dusty lilac cushion



GIGI cherry pink cushion



FURRY rose cushion



FURRY rose cushion



FURRY rose plaid/quilt



FITTED SHEETS oyster, purple breeze, burgundy



FLOOR illusion blue duvet cover set



TESSE zen blue duvet cover set



NAINA denim cushion



DAILAH ice blue roll cushion



YFKE cobalt blue cushion



RUTH cream plaid/quilt



FLOOR nightblue carpet



FITTED SHEETS white, oyster, denim



DORENA white duvet cover set



MINTE woodrose duvet cover set



TEDDY vanilla pouf



RUTH cream plaid/quilt



GIGI pale beach cushion



FURRY rose cushion



FURRY rose plaid/quilt



FITTED SHEETS oyster, woodrose, bright terra



IMARA zen blue duvet cover set



ANNEBELLA zen blue duvet cover set



DAILAH ice blue roll cushion



ANNEBELLA zen blue cushion



ANNEBELLA zen blue cushion



RUTH cream plaid/quilt



LEILA vanilla carpet



FITTED SHEETS oyster, iceblue, purple breeze

CHAPTER 2:

ILLUMINATING GREEN



Rifle green

Vanilla

Mineral green



Bone white

Mellow yellow

Easy green



Ivy green

Blue surf

Dreamy lilac



Bright terra

Smoke blue

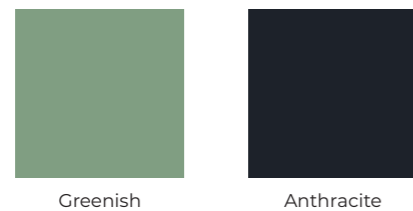
Soft teal



Orange bloom

In between green

Master green



Greenish

Anthracite

CHAPTER 2:

ILLUMINATING GREEN

The opulence of nature invites you to pause for a moment. Here unfolds a chapter that breathes the restorative power of green, a haven for your soul.

Within this nuanced palette, the Noleste print presents a richly filled canvas executed in soft, diffused greenish hues, allowing it to maintain a sense of tranquility. Noleste invites you to get lost in the exquisite details of this unique floral print.

The meandering branches adorned with flowers, leaves, and fruits on the Levine print feature an even softer colour palette, creating calmness through the repetitive pattern.

Colours like easy green and greenish harmonize with the ethereal allure of vanilla. These shades symbolise new beginnings. They become the canvas upon which our dreams take shape, exuding a sense of purity and serenity like the floral arrangement that shows off on the Ficara.

The innovative photographic print Annebelle takes centre stage on the vanilla hue, allowing soft pink and green tones to shimmer in this spacious floral print featuring lotuses, lilies, cherry blossoms, striped camellias, Japanese peonies, and irises.

As a contrasting standout, the Imara print breathes both serenity and strength. This print serves as a powerful testament to the transformative influence of nature, illuminating the profound truth that even standing still can unfold progress.

Die Üppigkeit der Natur lädt Sie ein einen Moment Innezuhalten. Hier entfaltet sich ein Kapitel, das die erholsame Kraft des Grüns einatmet, eine Oase für Ihre Seele.

In dieser nuancierten Farbpalette präsentiert der Noleste-Druck eine reich gefüllte Leinwand, die in weichen, abgestuften Grüntönen gehalten ist und so ein Gefühl der Ruhe vermittelt. Noleste lädt Sie dazu ein, sich in den exquisiten Details dieses einzigartigen Blumendrucks zu verlieren.

Die verschlungenen Zweige mit Blumen, Blättern und Früchten auf dem Levine-Druck weisen eine noch sanftere Farbpalette auf, die durch das sich wiederholende Muster Ruhe schafft.

Farben wie Easy Green und Greenish harmonieren mit dem ätherischen Charme von Vanilla und symbolisieren Neuanfänge. Sie werden zur Leinwand, auf der unsere Träume Gestalt annehmen, und strahlen ein Gefühl von Reinheit und Gelassenheit aus, wie das Blumenarrangement, das die Ficara zur Geltung bringt.

Der innovative Fotodruck des Annebella Dessins steht im Mittelpunkt der vanillefarbenen Leinwand und lässt zarte Rosa- und Grüntöne in diesem großzügigen Blumendruck mit Lotus, Lilien, Kirschblüten, gestreiften Kamelien, japanischen Pfingstrosen und Schwertlilien schimmern.

Der kontrastreiche Druck Imara strahlt Gelassenheit und Stärke zugleich aus. Dieser Druck ist ein kraftvolles Zeugnis für den transformativen Einfluss der Natur und verdeutlicht die tiefe Wahrheit, dass selbst Stillstand Fortschritt entfalten kann.

De weelderigheid van de natuur nodigt je uit om even stil te staan. Hier ontvouwt zich een hoofdstuk dat de Herstellende kracht van groen ademt, een toevluchtsoord voor je gemoed.

Binnen dit genuanceerde palet toont print Noleste een rijk gevuld canvas uitgevoerd in zachte, diffuse greenish kleurtinten waardoor het rust behoudt. Noleste laat je verdwalen in de prachtige details van deze unieke bloemenprint.

De slingerende takjes met bloemen, bladeren en vruchten op de Levine print bevatten een nog zachter kleurenpalet en creëren rust door het herhaaldelijke patroon.

Kleuren als easy green en greenish zijn in harmonie met de etherische allure van vanilla. Deze tinten symboliseren een nieuw begin. Ze worden het canvas waarop onze dromen vorm krijgen en stralen een gevoel van zuiverheid en sereniteit uit zoals het voorjaarsstuk dat pronkt op de Ficara.

De vernieuwende fotoprint Annebelle krijgt podium op de kleur vanilla, en laat zachte roze- en groentonen schitteren in deze ruim opgezette bloemenprint met lotussen, lelies, kersenbloemen, gestreepte camelia's, Japanse pioenrozen en irissen.

Als contrasterende uitschieter ademt print Imara zowel rust als kracht uit. Deze print symboliseert de impact van de natuur en laat zien dat stilstaan ook gepaard gaat met vooruitgang.

Yfke easy green

100% organic cotton satin, GOTS certified, 300TC, with piping
100% biologisch katoen satijn, GOTS gecertificeerd, 300TC, met piping
100% Bio-Baumwollsatin, GOTS-zertifiziert, 300TC, mit Paspel

The Yfke print is based on an original hand-painted, European block print from the 19th Century that was used to create wall paper. Wall paper started to become popular in the middle of the 18th Century and used to be made from textile waste, also known as rag paper. After applying a base colour, the sheets are printed using wooden blocks with a pattern. Each colour scheme requires a specific block print. When you look close enough at this opulent flower print, you'll see a diamond pattern shining through. This shows that this pattern was used to place this print repeatedly. With this authentic print on your bed you'll imagine yourself in an old manor house with high, richly decorated walls. Turn Yfke over to reveal the solid background colour, balancing out the entire cover. As a finishing touch, the edges of this duvet cover and pillowcases are trimmed with a piping.

The fine threads, in combination with the sateen weave and the high 300-thread count, gives the duvet cover extra sheen and a delightful feel. Shiny, smooth and strong organic GOTS-certified cotton sateen. The international GOTS certificate guarantees the use of organically grown cotton and ensures that cotton production occurs in an environmentally friendly and socially responsible manner. In other words, better for your skin, the planet, and the employees who make this fabric. This fabric creates a velvety soft duvet cover that will last many years and is guaranteed to provide a good night's rest.

Take a look at the mix and match (p. 134) for the complete combination with accessories.

Duvet cover YFKE easy green
Cushion YFKE easy green
Cushion KNITTED AJOUR antique white
Carpet IMARA anthracite



Duvet cover
Cushion
Fitted sheet

YFKE easy green
YFKE easy green
purple breeze



Cushions
Cushion
Pouf
Carpet
IMARA anthracite
GICI pale beach
IMARA anthracite
IMARA anthracite

Felipa dusty green

100% bamboo viscose, front jacquard woven/reverse satin woven, 300TC
bamboe viscose, voorzijde jacquard geweven/achterzijde satijn geweven, 300TC
100% Bambusviskose, Vorderseite jacquard gewebt/Rückseite Satin gewebt, 300 TC

This jacquard design owes its stylised flower pattern to the Ophelia print inspired by the Arts and Crafts movement, an English art and industrial design movement from the second half of the 19th century. Felipa is an exquisitely detailed design, executed in a rich jacquard weave, giving this apparently tonal design depth and character and a subtle, luxurious appearance. Turn the duvet over to reveal the unicoloured side of the cover. Felipa is made from 100% bamboo viscose.

This fabric is made by processing bamboo fibres into a fine textile fabric using the viscose production process. The extra high thread-count of 300 results in an even softer and more luxurious fabric. Bamboo viscose feels remarkably soft and has excellent heat-regulating and moisture-wicking properties, making it delightfully cool in the summer and comfortably warm in the winter. Bamboo is the fastest-growing plant in the world. It does not require fertilisers, pesticides, or other chemicals to grow, making its production sustainable. A fine choice year-round.

Take a look at the mix and match (p. 134) for the complete combination with accessories.

Duvet cover
Fitted sheet

FELIPA dusty green
dusty green



Minte dusty green

100% cotton satin, enzyme washed, 300TC, with double stitch finish
100% katoen satijn, enzymen wassing, 300TC, met double stitch afwerking
100% Baumwolle Satin, Enzym gewaschen, 300TC, mit Doppelnaht

Duvet cover
Duvet cover
Fitted sheet

MINTE dusty green
MINTE purple breeze
dusty green

With duvet cover Minte you'll be sure to get a great night's sleep. This premium ESSENZA duvetcover brings peace and atmosphere to the bedroom. It isn't just the various gorgeous uni colours that are simply enchanting, the quality of the fabric is just as amazing. The front and reverse of this duvet cover have the same uni colour. Once you slept under the Minte, you will never go back to something else. The fine yarn combined with the satin weave, the high 300 thread-count and the special enzyme washing give this duvet cover extra shine and make it feel very supple. An incredibly velvety soft duvet cover that is durable and timeless. And did you see the special double stitching around the edges? Whichever colour you'll choose, sweet dreams are guaranteed. A fun tip: mix & match the different pillow cases that are separately available in all the colours.

Take a look at the mix and match (p. 134) for the complete combination with accessories.

Minte purple breeze

100% cotton satin, enzyme washed, 300TC, with double stitch finish

100% katoen satijn, enzymen wassing, 300TC, met double stitch afwerking

100% Baumwolle Satin, Enzym gewaschen, 300TC, mit Doppelnaht



Duvet cover
Fitted sheet

MINTE purple breeze
purple breeze

With duvet cover Minte you'll be sure to get a great night's sleep. This premium ESSENZA duvetcover brings peace and atmosphere to the bedroom. It isn't just the various gorgeous uni colours that are simply enchanting, the quality of the fabric is just as amazing. The front and reverse of this duvet cover have the same uni colour. Once you slept under the Minte, you will never go back to something else. The fine yarn combined with the satin weave, the high 300 thread-count and the special enzyme washing give this duvet cover extra shine and make it feel very supple. An incredibly velvety soft duvet cover that is durable and timeless. And did you see the special double stitching around the edges? Whichever colour you'll choose, sweet dreams are guaranteed. A fun tip: mix & match the different pillow cases that are separately available in all the colours.

Take a look at the mix and match (p. 134) for the complete combination with accessories.



Duvet cover
Duvet cover
Fitted sheet

MINTE bright terra
MINTE purple breeze
purple breeze

Minte bright terra

100% cotton satin, enzyme washed, 300TC, with double stitch finish
100% katoen satijn, enzymen wassing, 300TC, met double stitch afwerking
100% Baumwolle Satin, Enzym gewaschen, 300TC, mit Doppelnaht

With duvet cover Minte you'll be sure to get a great night's sleep. This premium ESSENZA duvetcover brings peace and atmosphere to the bedroom. It isn't just the various gorgeous uni colours that are simply enchanting, the quality of the fabric is just as amazing. The front and reverse of this duvet cover have the same uni colour. Once you slept under the Minte, you will never go back to something else. The fine yarn combined with the satin weave, the high 300 thread-count and the special enzyme washing give this duvet cover extra shine and make it feel very supple. An incredibly velvety soft duvet cover that is durable and timeless. And did you see the special double stitching around the edges? Whichever colour you'll choose, sweet dreams are guaranteed. A fun tip: mix & match the different pillow cases that are separately available in all the colours.

Take a look at the mix and match (p. 136) for the complete combination with accessories.



Ficaria greenish

100% organic cotton satin, GOTS certified

100% biologisch katoen satijn, GOTS gecertificeerd

100% Bio-Baumwollsatin, GOTS-zertifiziert



Ficaria shows free work from photographer Kreetta Järvenpää (born in 1974, Finland). This art was made in the spring, which is seen in the choice of yellow and orange garden flowers like a daffodil in full bloom. There's other delicate flowers too, like bell-shaped hanging frittalarias and the subtle, playful accent of bright blue forget-me-nots. All these flowers grow in her own garden too, therefore capturing a very personal impression in this image. Usually, Kreetta takes photos of voluminous flower arrangements, contrary to this airy scene, bringing out the fresh, sunny spring feeling even more strongly. Turn the duvet cover over to balance the picture with a calming, unicoloured side in the same colour.

This duvet cover, made from 100% organic cotton, has the lovely characteristics that cotton has: it's breathable and absorbs moisture. The international GOTS certificate guarantees the use of organically grown cotton, yet also ensures that production takes place in an environmentally and socially responsible manner. That's better for your skin, better for the earth and also better for the employees. Besides, an organic cotton satin duvet cover feels much softer and smoother than a 'conventional' cotton duvet cover due to the special satin weave which gives a soft sheen to the fabric. This doesn't just feel luxurious, it looks luxurious too.

Take a look at the mix and match (p. 136) for the complete combination with accessories.



Duvet cover

FICARIA greenish



Duvet cover
Cushions
Fitted sheet

FICARIA greenish
KNITTED AJOUR fern yellow
dusty green



Duvet cover
Cushions
Cushion
Plaid
Fitted sheet

TESSE greenish
YFKE easy green
KNITTED AJOUR antique white
KNITTED AJOUR morning swim
dusty green

Tesse greenish

100% cotton satin, with piping
100% katoen satijn, met piping
100% Baumwolle Satin, mit Paspel

Tesse is a decorative ornamental print. Ornaments, or 'versierselen' as they were known in the 17th-century Netherlands, were commonly used at the time. Ornamental shapes were characterised by stylisation, symmetry or the repetition of a motif, all three of which are clearly visible in this Tesse print. The original of this print is an etching dating back to 1817 from the Rijksmuseum archives in Amsterdam. On this duvet cover, the Tesse design is positioned as a panel print with side panels in a different colour. As a finishing touch, the edges of this duvet cover and pillowcases are trimmed with piping. Turn the Tesse duvet over to discover a subtle two-tone wavy pattern.

Cotton sateen is, without a doubt, our favourite fabric for bedding. Cotton sateen is made from 100% natural cotton and therefore has the same characteristics as other cotton fabrics: breathability and moisture-wicking properties. A cotton sateen duvet cover feels much softer and smoother than a 'normal' cotton cover due to the special sateen weave that gives the fabric its sheen. The result is a fabric that looks and feels luxurious.

Take a look at the mix and match (p. 136) for the complete combination with accessories.



Trousers
Top

MARE TESSE greenish
POPPY TESSE greenish

Levine vanilla

100% cotton satin
100% katoen satijn
100% Baumwolle Satin



Duvet cover LEVINE vanilla
Carpet IMARA anthracite
Fitted sheet dusty green

The Levine shows subtly winding branches adorned with flowers, leaves and fruits. A (hand)blockprint from the Rijksmuseum in Amsterdam, made between 1861-1939 in Italy. By executing this print in an updated colour scheme of diffuse tones, it beautifully matches the collection's colour philosophy. As a unique twist, the duvet cover is trimmed with a two-tone border of the same print that seamlessly matches the back.

Cotton sateen is, without a doubt, our favourite fabric for bedding. Cotton sateen is made from 100% natural cotton and therefore has the same characteristics as other cotton fabrics: breathability and moisture-wicking properties. A cotton sateen duvet cover feels much softer and smoother than a 'normal' cotton cover due to the special sateen weave that gives the fabric its sheen. The result is a fabric that looks and feels luxurious.

Take a look at the mix and match (p. 136) for the complete combination with accessories.



Duvet cover LEVINE vanilla
Cushions KNITTED AJOUR antique white
Cushion MADs verdant green
Cushion YFKE easy green



Annebella vanilla

100% organic cotton satin, GOTS certified
100% biologisch katoen satijn, GOTS gecertificeerd
100% Bio-Baumwollsatin, GOTS-zertifiziert

A romantically widely placed floral print on a calming plain background. In the Annebella, you will find various flowers such as a striped camellia, lilies, Japanese peony, cherry blossom, Japanese iris, chrysanthemum, and lotus flower. These flowers are sourced from the Rijksmuseum in Amsterdam. They are coloured photographs taken by the Japanese photographer Kazumasa Ogawa, around 1890. The generous placement on a soft, slightly contrasting background creates a captivating print. Turn the duvet cover over to balance the picture with a calming, unicoloured side in the same colour.

This duvet cover, made from 100% organic cotton, has the lovely characteristics that cotton has: it's breathable and absorbs moisture. The international GOTS certificate guarantees the use of organically grown cotton, yet also ensures that production takes place in an environmentally and socially responsible manner. That's better for your skin, better for the earth and also better for the employees. Besides, an organic cotton satin duvet cover feels much softer and smoother than a 'conventional' cotton duvet cover due to the special satin weave which gives a soft sheen to the fabric. This doesn't just feel luxurious, it looks luxurious too.

Take a look at the mix and match (p. 138) for the complete combination with accessories.

Duvet cover ANNEBELLA vanilla
Cushion GIGI dry terra



Duvet cover ANNEBELLA vanilla



Cushions ANNEBELLA vanilla
Cushion GIGI dry terra
Plaid FURRY bright terra
Pouf TEDDY vanilla

Noleste greenish

100% cotton satin
100% katoen satijn
100% Baumwolle Satin



Duvet cover
Cushion
Plaid

NOLESTE greenish
KNITTED AJOUR morning swim
KNITTED AJOUR morning swim

With Noleste you'll get lost in the exquisite details of its richly filled floral canvas. The print showcases various dainty flowers such as a striped camellia, lilies, Japanese peony, cherry blossom, Japanese iris, chrysanthemum and lotus flower. These flowers are sourced from the Rijksmuseum in Amsterdam. They are coloured photographs taken by Japanese photographer Kazumasa Ogawa, around 1890. The use of colour gives the design a slightly vintage look. Turn Noleste over to reveal the solid background colour, balancing out the entire cover.

Cotton sateen is, without a doubt, our favourite fabric for bedding. Cotton sateen is made from 100% natural cotton and therefore has the same characteristics as other cotton fabrics: breathability and moisture-wicking properties. A cotton sateen duvet cover feels much softer and smoother than a 'normal' cotton cover due to the special sateen weave that gives the fabric its sheen. The result is a fabric that looks and feels luxurious.

Take a look at the mix and match (p. 138) for the complete combination with accessories.



Duvet cover NOLESTE greenish
Cushion KNITTED AJOUR morning swim
Fitted sheet dusty green



Kimono SARAI NOLESTE greenish

Yule vanilla

100% cotton satin
100% katoen satijn
100% Baumwolle Satin



Duvet cover
Fitetd sheet

YULE vanilla
oyster

Yule is covered with a sunflower print that is repeated across the canvas. These sunflowers stem from a 1688 engraving from the Rijksmuseum and are made up of countless fine lines that add extra depth to the flowers. The repetitive placing of the sunflower adds a modern twist to this 17th-century engraving. The small modern flowers gracing the other side of the duvet cover and the pillowcases, in combination with this print, provide the perfect finish.

Cotton sateen is, without a doubt, our favourite fabric for bedding. Cotton sateen is made from 100% natural cotton and therefore has the same characteristics as other cotton fabrics: breathability and moisture-wicking properties. A cotton sateen duvet cover feels much softer and smoother than a 'normal' cotton cover due to the special sateen weave that gives the fabric its sheen. The result is a fabric that looks and feels luxurious.

Take a look at the mix and match (p. 138) for the complete combination with accessories.



Duvet cover YULE vanilla
Cushion KNITTED A'JOUR antique white
Cushion GIGI pale beach
Cushion JULIA sand
Fitted sheet oyster

Floor oyster

100% cotton satin
100% katoen satijn
100% Baumwolle Satin



Duvet cover
Carpet
FLOOR oyster
IMARA anthracite

Floor is a version of our bestselling print, Fleur, but designed using tonal colours, resulting in a beautifully subtle and classic print that instantly gives every bedroom a chic look. Floor owes its allure to a quiet simplicity with a tone-on-tone print that retains the depth of this iconic floral print. This luxurious design is a perfect way to create a classic yet contemporary look with a serene atmosphere in the bedroom. Turn the duvet over to reveal a tranquil solid cover in the same colour.

Cotton sateen is, without a doubt, our favourite fabric for bedding. Cotton sateen is made from 100% natural cotton and therefore has the same characteristics as other cotton fabrics: breathability and moisture-wicking properties. A cotton sateen duvet cover feels much softer and smoother than a 'normal' cotton cover due to the special sateen weave that gives the fabric its sheen. The result is a fabric that looks and feels luxurious.

Take a look at the mix and match (p. 138) for the complete combination with accessories.

Karli mineral green

100% cotton satin
100% katoen satijn
100% Baumwolle Satin



The Karli print is a design with an iconic floral print as you would expect from ESSENZA. The designers have created a composition of flowers from different paintings from the Dutch Masters archive. The print showcases countless, finely-painted flowers from all seasons, most of which were relatively rare during the time of the Dutch Masters. This print features a rich and varied colour palette, making it a source of endless fascination. Turn the duvet over for a beautiful solid cover in the print's background colour. The Karli will automatically function as a unique accent in the bedroom by styling this side up.

Cotton sateen is, without a doubt, our favourite fabric for bedding. Cotton sateen is made from 100% natural cotton and therefore has the same characteristics as other cotton fabrics: breathability and moisture-wicking properties. A cotton sateen duvet cover feels much softer and smoother than a 'normal' cotton cover due to the special sateen weave that gives the fabric its sheen. The result is a fabric that looks and feels luxurious.

Take a look at the mix and match (p. 140) for the complete combination with accessories.



Top
Trousers

LUYZA UNI easy green
JULES UNI easy green



Duvet cover
Cushion
Fitted sheet

DIRCE vanilla
MADS verdant green
purple breeze

Dirce vanilla

100% cotton percale, 200TC

100% katoen perkal, 200TC

100% Baumwolle Perkal, 200TC



Duvet cover
Cushion
Cushion
Pouf
Fitted sheet

DIRCE vanilla
MADS verdant green
JULIA sand
TEDDY vanilla
purple breeze

The inspiration for Dirce comes from drawing 'Branch with purple lilacs' by Maria Geertruida Barbiers-Snabillé (1786-1838) from the archives of the Rijksmuseum. A lilac tree blooms in spring time and spreads a characteristic spring scent. Barbiers-Snabillé captured this perfectly by drawing the lilacs with a brush in watercolour. The elegant pattern of the Dirce is created by placing this drawing in repeat so the branches subtly fall over each other, over and over again.

Made from 100% cotton percale, which gives this duvet cover a crisp and cool feeling. Our percale bedding is made from high quality, pure cotton and is breathable and moisture absorbent. The fabric has a matte sheen, giving it both a natural and timeless look.

Take a look at the mix and match (p. 140) for the complete combination with accessories.



Cushions
Carpet

YFKE easy green
IMARA caracite



Cushion
YFKE easy green



Imara anthracite

100% cotton percale, 200TC

100% katoen perkal, 200TC

100% Baumwolle Perkal, 200TC

The Imara showcases a hand-painted silhouette print featuring abstracted Clematises. The Clematis is a climbing plant that comes in many variations: from small subtle flowers to very large colourful ones. The Imara print incorporates all these different types of Clematis and reduces them to the strength of their shapes. By making this print in contrasting colours, it radiates both tranquillity and valiant energy. Turn duvet cover Imara over and discover the print in negative, giving it a unique and playful look.

Made from 100% cotton percale, which gives this duvet cover a crisp and cool feeling. Our percale bedding is made from high quality, pure cotton and is breathable and moisture absorbent. The fabric has a matte sheen, giving it both a natural and timeless look.

Take a look at the mix and match (p. 140) for the complete combination with accessories.

Duvet cover IMARA anthracite
Duvet cover MENTE purple breeze
Cushion GIGI pale beach
Plaid RUTH anthracite
Fitted sheet purple breeze
Carpet IMARA anthracite



Duvet cover
Trousers

IMARA anthracite
MARE IMARA anthracite



Carpet
Pouf

IMARA anthracite
IMARA anthracite

Chess anthracite

100% cotton satin
100% katoen satijn
100% Baumwolle Satin



Duvet cover CHESS anthracite
Cushion cover IMARA anthracite
Fitted sheet oyster
Carpet IMARA anthracite

The Chess shows a modern interpretation of the classic Vichy check as the pattern is placed in a larger scale. When you look at the print up close, you'll discover a subtle play of contrasts; part of the check is made up of an enormous amount of tiny blocks. The use of two main colours give the Chess rest and elegance. Turn the duvet over and discover a unique two-coloured stripe in the same colours, which are again built up from tiny blocks.

Cotton sateen is, without a doubt, our favourite fabric for bedding. Cotton sateen is made from 100% natural cotton and therefore has the same characteristics as other cotton fabrics: breathability and moisture-wicking properties. A cotton sateen duvet cover feels much softer and smoother than a 'normal' cotton cover due to the special sateen weave that gives the fabric its sheen. The result is a fabric that looks and feels luxurious.

Take a look at the mix and match (p. 140) for the complete combination with accessories.

Chess dusty green

100% cotton satin
100% katoen satijn
100% Baumwolle Satin



Duvet cover
Fitted sheet
CHESS dusty green
dusty green

The Chess shows a modern interpretation of the classic Vichy check as the pattern is placed in a larger scale. When you look at the print up close, you'll discover a subtle play of contrasts; part of the check is made up of an enormous amount of tiny blocks. The use of two main colours give the Chess rest and elegance. Turn the duvet over and discover a unique two-coloured stripe in the same colours, which are again built up from tiny blocks.

Cotton sateen is, without a doubt, our favourite fabric for bedding. Cotton sateen is made from 100% natural cotton and therefore has the same characteristics as other cotton fabrics: breathability and moisture-wicking properties. A cotton sateen duvet cover feels much softer and smoother than a 'normal' cotton cover due to the special sateen weave that gives the fabric its sheen. The result is a fabric that looks and feels luxurious.

Take a look at the mix and match (p. 142) for the complete combination with accessories.

Chess grey

100% cotton satin
100% katoen satijn
100% Baumwolle Satin

The Chess shows a modern interpretation of the classic Vichy check as the pattern is placed in a larger scale. When you look at the print up close, you'll discover a subtle play of contrasts; part of the check is made up of an enormous amount of tiny blocks. The use of two main colours give the Chess rest and elegance. Turn the duvet over and discover a unique two-coloured stripe in the same colours, which are again built up from tiny blocks.

Cotton sateen is, without a doubt, our favourite fabric for bedding. Cotton sateen is made from 100% natural cotton and therefore has the same characteristics as other cotton fabrics: breathability and moisture-wicking properties. A cotton sateen duvet cover feels much softer and smoother than a 'normal' cotton cover due to the special sateen weave that gives the fabric its sheen. The result is a fabric that looks and feels luxurious.

Take a look at the mix and match (p. 142) for the complete combination with accessories.

Duvet cover
Fitted sheet

CHESS grey
white



MIX & MATCH

Each season, we carefully curate collections that are long-lasting in style and match the ongoing collections. The mix & match provides inspiration that matches the campaign images and assists in putting collections together and showcase them in offline and online shopping environments.

Duvet cover NOLESTE greenish
Cushion YFKE easy green
Cushion MADS verdant green
Cushions KNITTED AJOUR antique white
Fitted sheet dusty green



YFKE easy green duvet cover set



MINTE purple breeze duvet cover set



IMARA anthracite pouf



YFKE easy green cushion



KNITTED AJOUR morning swim cushion



KNITTED AJOUR morning swim plaid



IMARA anthracite carpet



FITTED SHEETS oyster, purple breeze, dusty green



FELIPA dusty green duvet cover set



MINTE dusty green duvet cover set



TESSE reef green pouf



YFKE easy green cushion



MADS verdant green cushion



JULIA sand cushion



JULIA sand plaid/quilt



FITTED SHEETS oyster, purple breeze, dusty green



MINTE dusty green duvet cover set



MINTE purple breeze duvet cover set



ANNEBELLA vanilla cushion



ANNEBELLA vanilla cushion



KNITTED AJOUR morning swim cushion



JULIA sand cushion



JULIA sand plaid/quilt



FITTED SHEETS oyster, purple breeze, dusty green



MINTE purple breeze duvet cover set



TESSE greenish duvet cover set



MADS verdant green cushion



KNITTED AJOUR morning swim cushion



KNITTED AJOUR morning swim cushion



KNITTED AJOUR morning swim plaid



JULIA sand plaid/quilt



FITTED SHEETS oyster, purple breeze, dusty green



MINTE bright terra duvet cover set



MINTE purple breeze duvet cover set



TESSE reef green pouf



YFKE easy green cushion



JULIA sand cushion



JULIA sand plaid/quilt



IMARA anthracite carpet



FITTED SHEETS oyster, bright terra, purple breeze



FICARIA greenish duvet cover set



MINTE dusty green duvet cover set



JULIA sand cushion



JULIA sand plaid/quilt



KNITTED AJOUR fern yellow cushion



KNITTED AJOUR fern yellow cushion



KNITTED AJOUR fern yellow plaid



FITTED SHEETS oyster, dusty green, olive



TESSE greenish duvet cover set



YFKE easy green duvet cover set



TESSE reef green pouf



YFKE easy green cushion



KNITTED AJOUR morning swim cushion



KNITTED AJOUR morning swim cushion



KNITTED AJOUR morning swim plaid



FITTED SHEETS oyster, dusty green, purple breeze



LEVINE vanilla duvet cover set



MINTE purple breeze duvet cover set



MADS verdant green cushion



YFKE easy green cushion



KNITTED AJOUR morning swim cushion



KNITTED AJOUR morning swim cushion



KNITTED AJOUR morning swim plaid



FITTED SHEETS oyster, dusty green, purple breeze



ANNEBELLA vanilla
duvet cover set



NOLESTE greenish
duvet cover set



TEDDY vanilla
pouf



FURRY bright terra
roll cushion



ANNEBELLA vanilla
cushion



ANNEBELLA vanilla
cushion



RUTH cream
plaid/quilt



FITTED SHEETS
oyster, dusty green, purple breeze



NOLESTE greenish
duvet cover set



MINTE bright terra
duvet cover set



FURRY bright terra
roll cushion



FURRY bright terra
cushion



KNITTED AJOUR morning swim
cushion



KNITTED AJOUR morning swim
cushion



KNITTED AJOUR morning swim
plaid



FITTED SHEETS
oyster, dusty green, bright terra



YULE vanilla
duvet cover set



FLOOR oyster
duvet cover set



GIGI pale beach
cushion



KNITTED AJOUR antique white
cushion



JULIA sand
cushion



JULIA sand
plaid/quilt



IMARA anthracite
carpet



FITTED SHEETS
oyster, dusty green, olive



FLOOR oyster
duvet cover set



IMARA anthracite
duvet cover set



IMARA anthracite
pouf



FURRY vanilla
cushion



FURRY vanilla
cushion



RUTH anthracite
plaid/quilt



IMARA anthracite
carpet



FITTED SHEETS
oyster, cement, anthracite



KARLI mineral green duvet cover set



TESSE greenish duvet cover set



KNITTED AJOUR morning swim cushion



GIGI pale beach cushion



KNITTED AJOUR morning swim cushion



KNITTED AJOUR morning swim plaid



RUTH laurel green plaid/quilt



FITTED SHEETS oyster, dusty green, denim



DIRCE vanilla duvet cover set



MINTE purple breeze duvet cover set



MADS verdant green cushion



GIGI pale beach cushion



JULIA sand cushion



KNITTED AJOUR morning swim cushion



RUTH laurel green plaid/quilt



FITTED SHEETS oyster, dusty green, purple breeze



IMARA anthracite duvet cover set



MINTE purple breeze duvet cover set



IMARA anthracite pouf



GIGI pale beach cushion



IMARA anthracite cushion



RUTH anthracite plaid/quilt



IMARA anthracite carpet



FITTED SHEETS oyster, cement, purple breeze



CHESS anthracite duvet cover set



IMARA anthracite duvet cover set



IMARA anthracite pouf



GIGI pale beach cushion



IMARA anthracite cushion



IMARA anthracite cushion



IMARA anthracite carpet



FITTED SHEETS oyster, cement, purple breeze



CHES dust green
duvet cover set



CHES grey
duvet cover set



KNITTED AJOUR morning swim
cushion



KNITTED AJOUR morning swim
cushion



KNITTED AJOUR morning swim
plaid



RUTH laurel green
plaid/quilt



IMARA anthracite
carpet



FITTED SHEETS
white, dusty green, denim



CHES grey
duvet cover set



CHES dust green
duvet cover set



KNITTED AJOUR morning swim
cushion



KNITTED AJOUR morning swim
cushion



KNITTED AJOUR morning swim
plaid



RUTH anthracite
plaid/quilt



IMARA anthracite
carpet



FITTED SHEETS
white, dusty green, denim



Duvet cover
Cushion

FLOOR oyster
MADS FURRY vanilla

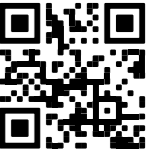
OVERVIEW

Here you'll find an overview of the new and continuing collections, including information about materials, sizing and unique details. Scan the qr code to view the price lists.

DE



NL



MINTE

100% cotton satin, enzyme washed, 300TC, double stitch seam finish
100% katoen satijn, enzymen wassing, 300TC, met double stitch afwerking
100% Baumwolle Satin, Enzym gewaschen, 300TC, mit Doppelnaht

This premium material is made of the finest cotton satin. Thanks to the fine yarn in combination with the satin weave, the high 300 thread count and the special washing process, the duvet cover gains shine and feels supple. An unprecedentedly velvet-soft duvet cover. Available in a broad selection of colours, the Minte matches every bedroom and easily mixes with the entire ESSENZA collection.

- ◆ Extremely soft, absorbent and breathable.
- ◆ Perfect for year-round use
- ◆ Gets softer with every wash. For the look of this product we advise you not to iron.
- ◆ Every ESSENZA item is designed to last, even after years of use.
- ◆ Oeko-Tex certified: the certification ensures that this product has been tested and verified to be free from harmful substances and skinfriendly.



ice blue



denim



anthracite



oyster



yellow straw



bright terra



woodrose



dusty rose



white



grey



dusty green



moss



nightblue



cement



olive



leather brown



burgundy



purple breeze

100% organic cotton satin, GOTS certified, 300TC, with piping
 100% biologisch katoen satijn, GOTS gecertificeerd, 300TC, met piping
 100% Bio-Baumwollsatin, GOTS-zertifiziert, 300TC, mit Paspel



This premium 100% cotton satin material is soft & sleek, with a subtle sheen which creates a sumptuous look and feel in every bedroom. This smooth-asbutter material is without a doubt our favourite fabric for bedding. The extra fine yarn combined with the satin weave and the supremely high-quality 300 thread-count is soft and durable with a smooth and shiny feel that only gets better with time.

- ◆ 100% organically grown cotton: naturally breathable and absorbent.
- ◆ Soft and smooth feel and due to the special sateen weave, a nice sheen.
- ◆ Perfect for year-round use.
- ◆ Better for the planet, the employees who make this fabric and your skin.
- ◆ Sateen weave makes the bedding wrinkle-resistant: no need to iron.
- ◆ Every ESSENZA item is designed to last, even after years of use.
- ◆ GOTS certified: the certification ensures that this product has been produced and processed following strict environmental and social criteria.
- ◆ Finished with a luxurious piping.



Maere
pink sand



Maere
hazy blue



Leila
vanilla



Leila
chambray blue



Leila
forest green



Yfke
cobalt blue



Yfke
easy green



Duvet cover YFKE easy green

100% organic cotton satin, GOTS certified
 100% biologisch katoen satijn, GOTS gecertificeerd
 100% Bio-Baumwollsatin, GOTS-zertifiziert



100% organic cotton satin is soft & sleek, with a subtle sheen which creates a sumptuous look and feel in every bedroom. This material is without a doubt our favourite fabric for bedding.

- ◆ 100% organically grown cotton: naturally breathable and absorbent.
- ◆ Soft and smooth feel and due to the special sateen weave, a nice sheen.
- ◆ Perfect for year-round use.
- ◆ Sateen weave makes the bedding wrinkle-resistant: no need to iron.
- ◆ Every ESSENZA item is designed to last, even after years of use.
- ◆ GOTS certified: the certification ensures that this product has been produced and processed following strict environmental and social criteria. Better for the planet, the employees who make this fabric and your skin.

** Finished with a luxurious piping.*



Annebella
vanilla



Annebella
zen blue



Ficaria
greenish



Phaea
woodrose



Isabella*
azur blue



Duvet cover

PHAEA woodrose

50% Cotton Satin, 50% Lyocell, 300TC, with piping
50% katoen satijn, 50% Lyocell, 300TC, met piping
50% Baumwolle Satin, 50% Lyocell, 300TC, mit Paspel

This premium fabric is made out of 50% cotton satin and 50% lyocell. This blend results in a silky-smooth, environmentally friendly material with a natural sheen.

- ◆ Lyocell is a sustainable material made from fast-growing eucalyptus or birch trees that grow well in even the most depleted soils without irrigation and with few pesticides or herbicides. No toxic chemicals and less water are used during the production process.
- ◆ Silky and smooth feel. Cooling and breathable.
- ◆ The high 300 thread-count is soft and durable. Smooth surface: ensuring natural comfort for a sensitive skin.
- ◆ Warm in the winter and cool in the summer. A fine choice yearround.
- ◆ Every ESSENZA item is designed to last, even after years of use.
- ◆ Oeko-Tex certified: the certification ensures that this product has been tested and verified to be free from harmful substances and skin-friendly.
- ◆ Finished with a luxurious piping.



Nh

Clemence
cumin yellow



Nh

Gwendolyn
darkest green



Duvet cover

CLEMENCE cumin yellow

100% cotton satin
 100% katoen satijn
 100% Baumwolle Satin

100% cotton satin is soft & sleek, with a subtle sheen which creates a sumptuous look and feel in every bedroom. This material is without a doubt our favourite fabric for bedding.

- ◆ Naturally breathable and absorbent.
- ◆ Soft and smooth feel, and due to the special sateen weave, a nice sheen.
- ◆ Perfect for year-round use.
- ◆ Sateen weave makes the bedding wrinkle-resistant: no need to iron.
- ◆ Every ESSENZA item is designed to last, even after years of use.
- ◆ Oeko-Tex certified: the certification ensures that this product has been tested and verified to be free from harmful substances and skin-friendly.



Floor oyster



Floor illusion blue



Floor nightblue



Karli darling pink



Karli purple tulip



Karli mineral green



Karli reef green



Sora greenish



Sora smoke blue



Chess grey



Chess dusty green



Chess anthracite



Ophelia greenish



Ophelia smoke blue



Ophelia hazy blue



Ophelia sahara sun



Ophelia plum wine



Fleur ecru



Fleur taupe



Fleur nightblue



Fleur Festive blooming black



Lisa silk



Levine vanilla



Nolest greenish



Yule vanilla



Yule chambray blue



Amadee sand



Amadee black



Elegant view sky



Daffodils reunited beachwood white



Floral girl black

100% Cotton Satin, with piping
100% katoen satijn met piping
100% Baumwolle Satin mit Paspel

100% cotton satin is soft & sleek, with a subtle sheen which creates a sumptuous look and feel in every bedroom. This material is without a doubt our favourite fabric for bedding.

- ◆ Naturally breathable and absorbent.
- ◆ Soft and smooth feel, and due to the special sateen weave, a nice sheen.
- ◆ Perfect for year-round use.
- ◆ Sateen weave makes the bedding wrinkle-resistant: no need to iron.
- ◆ Every ESSENZA item is designed to last, even after years of use.
- ◆ Oeko-Tex certified: the certification ensures that this product has been tested and verified to be free from harmful substances and skin-friendly.
- ◆ Finished with a luxurious piping.



Tesse
greenish



Tesse
zen blue



Tesse
reef green



Tesse
cherry red



Rosemary
spot on pink



Duvet cover
TESSE zen blue

100% bamboo viscose, 300TC, front jacquard woven, reverse satin woven
100% bamboe viscose, 300TC, voorzijde jacquard geweven, achterzijde satijn geweven
100% Bambus-Viskose, 300 TC, Vorderseite Jacquardgewebe, Rückseite Satingewebe

Made of 100% bamboo viscose, this premium fabric is durable and has a smooth and silky feel. The supremely high 300 thread-count makes the fabric soft and luxurious.

- ◆ Extremely soft, silky and breathable.
- ◆ As bamboo is the fastest-growing plant in the world, it does not require fertilisers or other pesticides.
- ◆ Bamboo bedding is hypoallergenic, so perfect for a sensitive skin.
- ◆ Warm in the winter and cool in the summer. A fine choice year-round.
- ◆ Every ESSENZA item is designed to last, even after years of use.
- ◆ Oeko-Tex certified: the certification ensures that this product has been tested and verified to be free from harmful substances and skin-friendly.



Felipa
oyster



Felipa
dusty green



Belen
vanilla



Belen
fern yellow



Belen
night blue



Duvet cover FELIPA dusty green

100% Cotton Percale, 200TC
100% katoen perkal, 200TC
100% Baumwolle Perkal, 200TC

100% cotton percale is a crispy and fresh material with a natural matt finish.

- ◆ Naturally breathable and absorbent.
- ◆ With a high threadcount and fine yarns making the material feel incredibly soft.
- ◆ The crispy cool feel of the fabric is perfect for warmer nights.
- ◆ Every ESSENZA item is designed to last, even after years of use.
- ◆ Oeko-Tex certified: the certification ensures that this product has been tested and verified to be free from harmful substances and skin-friendly.



May
white



April
white



Dorena
white



Dirce
vanilla



Imara
zen blue



Imara
anthracite



Duvet cover IMARA zen blue

100% Cotton (Broderie Anglaise)
100% katoen (broderie anglaise)
100% Baumwolle mit Stickerei Anglaise

This 100% cotton fabric guarantees a good night's rest. This stylish fabric features a crisp, clean weave – garment washed for a supersoft, lived-in finish.

- ◆ Naturally breathable and absorbent.
- ◆ Woven and washed with a special technique to ensure the bedding feels super soft.
- ◆ Perfect for year-round use.
- ◆ Easy to wash and incredibly long-lasting quality.
- ◆ Every ESSENZA item is designed to last, even after years of use.
- ◆ Oeko-Tex certified: the certification ensures that this product has been tested and verified to be free from harmful substances and skin-friendly.



Maen
white



Maen
nightblue



Duvet cover

MAEN nightblue

GUY

100% cotton renforcé, vintage washed, double stitch seam
100% katoen renforcé, vintage wassing, met double stitch afwerking
100% Baumwolle Renforcé, Enzym gewaschen, mit Doppelnaht

Made out of 100% washed cotton renforcé. Crafted from highquality, durable material, this duvet cover features a unique texture that is soft to the touch.

- ◆ Naturally breathable and absorbent.
- ◆ The special washing gives the fabric an extra soft feel and a slightly worn-in appearance, giving it a vintage look. The colour will vary slightly from product to product and will fade into a softer shade when using and washing.
- ◆ Gets softer with every wash. For the look of this product we advise you not to iron.
- ◆ Every ESSENZA item is designed to last, even after years of use.
- ◆ Oeko-Tex certified: the certification ensures that this product has been tested and verified to be free from harmful substances and skin-friendly.



stone



anthracite



white



silver



pistache



sea green



blue



Duvet cover

GUY sea green

ZEVA

100% Cotton flannel with double stitch finishing
100% katoen flannel, met double stitch afwerking
100% Baumwolle Flannel, mit Doppelnaht

This 100% cotton flannel fabric is super snuggly and seriously soft. A warm fabric, ideal for the chilly winter nights.

- ◆ This 100% natural cotton is brushed to create an undeniably softness, with a woolly look and feel.
- ◆ It's as soft as a lived-in shirt with the elegance of a premium material.
- ◆ Breathable and moisture absorbent. The soft fabric adapts directly to your body temperature.
- ◆ Low-maintenance: gets softer with every wash.
- ◆ Every ESSENZA item is designed to last, even after years of use.
- ◆ Oeko-Tex certified: the certification ensures that this product has been tested and verified to be free from harmful substances and skin-friendly.



oyster



elephant grey



dusty green



nightblue

Duvet cover
Fitted sheet

ZEVA oyster
oyster





FITTED SHEETS

A matching fitted sheet is just as important as the duvet cover! As everyone has a different personal preference, we offer four different qualities of fitted sheets in our collection:

- ◆ The Perfect Organic Jersey (160 gr/m²)
- ◆ Minte (300TC)
- ◆ Premium Percale (200TC)
- ◆ SatIn (220TC)

THE PERFECT ORGANIC JERSEY

Fitted sheets 95% cotton / 5% elastane, GOTS certified, 160 gr/m2 knitted

A good night's sleep is of utmost importance, making this sheet a must. The Perfect Organic Jersey fitted sheet from ESSENZA is made of 95% GOTS-certified organic cotton and 5% elastane. In combination with all-round elastic band, gives it an extra strong stretch quality for the perfect fit. The fabric is pilling free, which will keep the sheet super soft & smooth. In addition, this organic jersey is breathable and wonderfully kind to the skin.



Fitted sheet

All colors

Corner height 35 cm

90/100x200/220 cm

140/160x200/220 cm

180/200x200/220 cm



MINTE

100% cotton satin, enzym washed, 100 gr/m2, 300TC

The ultimate soft and supple fabric of the Minte duvet cover in fitted sheets.

The Minte sheet is made from an extra high-quality cotton satin (300TC) and lasts for a very long time. The fabric is soft and smooth with a light shine and owes its beautiful, casual look to the special enzyme wash. The elastic all around the edges ensures a perfect fit. Ideal for a wonderfully comfortable night's sleep.

Fitted sheet

All colors

Corner height 35 cm

80x200 cm

90x200 cm

90x210 cm

140x200 cm

160x200 cm

180x200 cm

200x200 cm

Topper fitted sheet

Only anthracite, cafe noir, moss & white

Corner height 14 cm

160x200 cm

180x200 cm

180x210 cm

180x220 cm



SATIN

Fitted sheet 100% cotton satin, 130 gr/m2, 220TC

The Satin program from ESSENZA is made from the finest 220TC combed cotton satin, so it feels soft and comfortable on the skin. The special weave gives this cotton satin a luxurious appearance and a light shine. The fabric is very easy to maintain, weighs 130 gr/m2 and feels light and flexible.

Fitted sheet

All colors

Corner height 30 cm

- 80x200 cm
- 90x200 cm
- 90x210 cm
- 140x200 cm
- 160x200 cm
- 180x200 cm

Only oyster & white

- 180x210 cm
- 180x220 cm

Pillowcase

with 5cm Oxford-border

60x70 cm

Topper fitted sheet

Only oyster & white

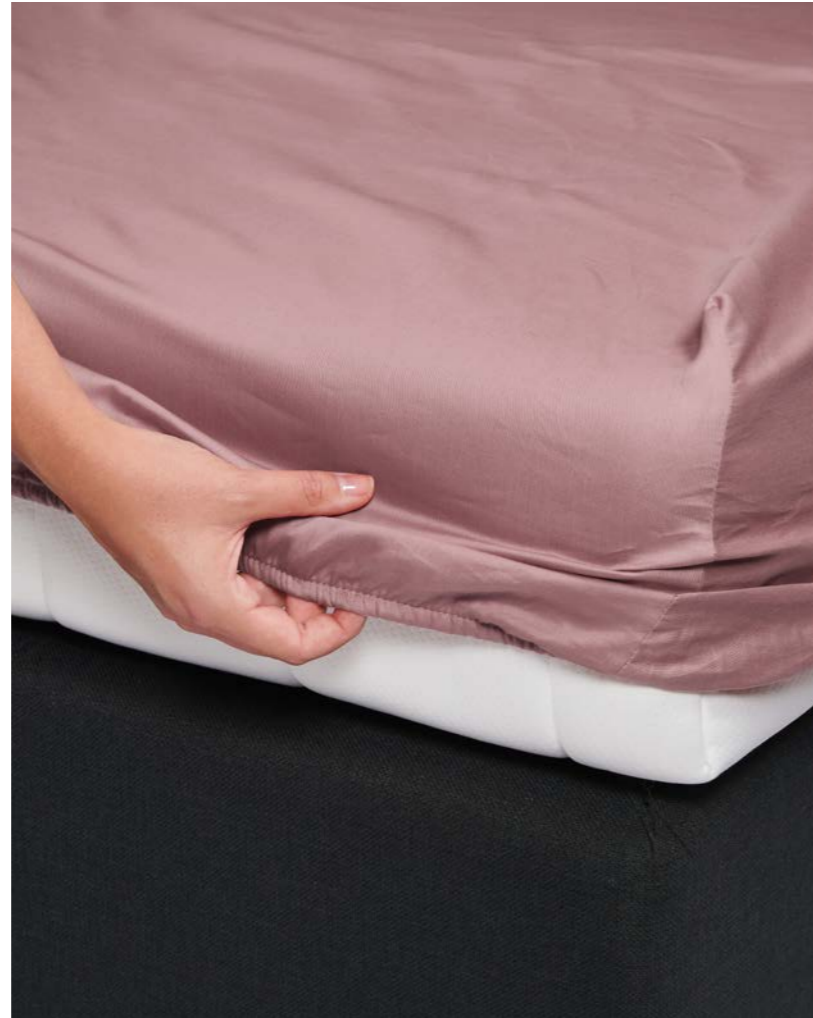
Corner height 13 cm

- 80x200 cm
- 90x200 cm
- 90x210 cm
- 140x200 cm
- 160x200 cm
- 180x200 cm
- 180x210 cm

Flat sheet

Only oyster & white

- 160x260 cm
- 240x260 cm
- 270x260 cm



PREMIUM PERCALE

Fitted sheet 100% cotton percale, 130 gr/m2, 200TC

The Premium Percale program from ESSENZA is made from the finest 200TC combed cotton percale, so it feels soft and gentle on the skin. The fabric has an easy-care finish and is therefore maintenance-friendly and wrinkle-free.

Fitted sheet

All colors

Corner height 35 cm

- 80x200 cm
- 90x200 cm
- 90x210 cm
- 90x220 cm
- 100x200 cm
- 120x200 cm
- 140x200 cm
- 160x200 cm
- 160x210 cm
- 180x200 cm
- 180x210 cm
- 180x220 cm

Pillowcase

60x70 cm

Topper fitted sheet

Only anthracite, oyster & white

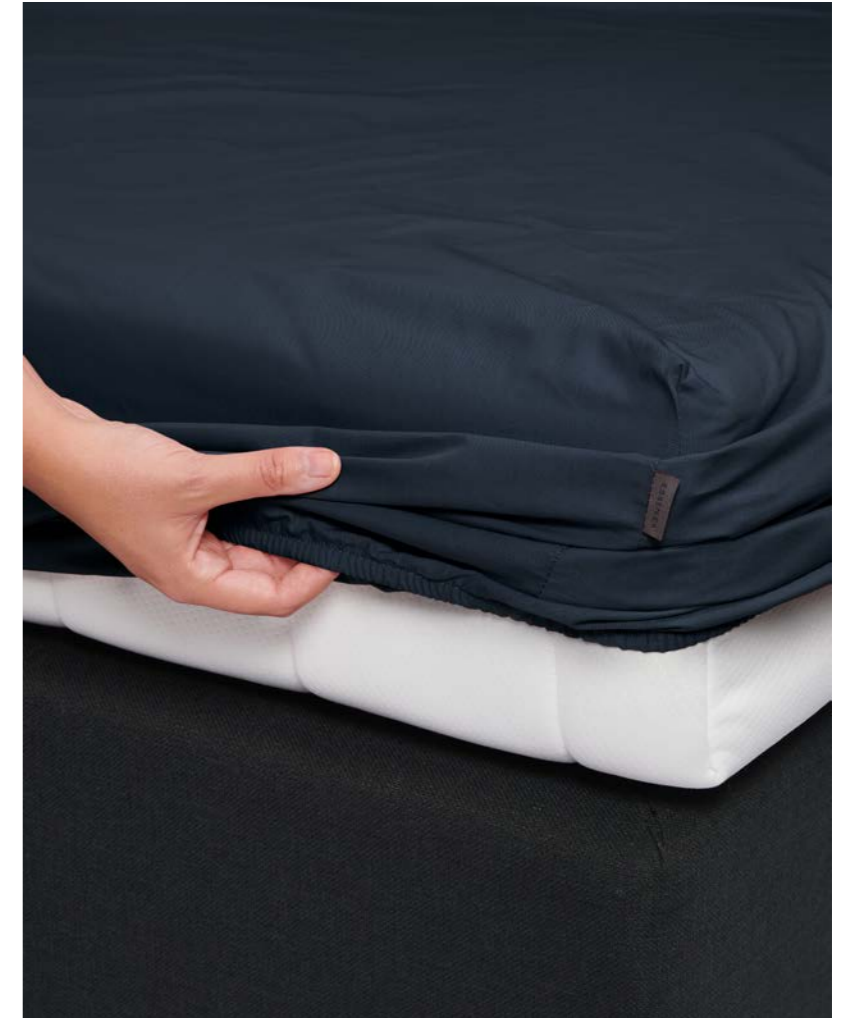
Corner height 13 cm

- 90x200 cm
- 90x210 cm
- 140x200 cm
- 160x200 cm
- 180x200 cm
- 180x210 cm

Flat sheet

Only oyster & white

- 180x280 cm
- 240x280 cm
- 270x280 cm





DUVETS AND PILLOWS

This ESSENZA collection of duvets and pillows, is developed with innovation and sustainability in mind. The collection consists of five different duvets and four pillows. With every product we are innovative in the use of materials and sustainable in the use of recycled or sustainably produced materials. With the use of both natural and synthetically produced materials, there is something for every sleeper.

THE PERFECT CIRCLE

Filling: Dacron®Eco (100% recycled synthetic polyester fibre RPET)
Cover: 100% Microfiber Premium, 100% recycled polyester with a peachskin finish and treated against dust mites



Are you working towards a circular economy? Then *The Perfect Circle* is a step in the right direction! This synthetic duvet and pillow are made from the 100% recycled material. This high-quality polyester material can be recycled time and time again. The cover is made from a premium quality microfibre: beautifully softened with a peach finish. The filling of *The Perfect Circle* consists of 100% recycled synthetic fibres, made from old plastic bottles. This reduces the ecological footprint, because the environment and new raw materials are spared. For an extra special touch, the Aurelie design is subtly printed in the fabric. The bedding has also been treated against dust mites. That makes this duvet completely circular. And therefore one of the best green choices of all duvets.

Duvet	140x220 cm
Duvet	200x220 cm
Duvet	240x220 cm
Duvet	260x220 cm
Four seasons duvet	140x220 cm
Four seasons duvet	200x220 cm
Four seasons duvet	240x220 cm
Four seasons duvet	260x220 cm
Summer duvet	140x220 cm
Summer duvet	200x220 cm
Summer duvet	240x220 cm
Summer duvet	260x220 cm
Pillow	60x70 cm

THE NATURAL WOOL

Filling: 60% pure wool, 40% TENCEL™ (Lyocell)
Cover: 100% cotton satin (sustainably grown), 298TC



This filling is unique, innovative and blends the best of two worlds: pure sheared wool from the Texel sheep is mixed with TENCEL™. This results in a duvet that is wonderfully supple and airy and has the right insulation for all seasons.

Both sheared wool and Tencel™ are produced in a sustainable way and together create this delightful duvet. This duvet is natural, biodegradable and reusable. The wool comes from sheeps from Texel: the Texelaar. Useful wool fibers grow from head to tail with this sheep. Both the virgin wool as the lyocell are produced sustainable and processed into this duvet cover. With this duvet you really have a Dutch products in hands, also the production is in a factory in The Netherlands.

Duvet	140x220 cm
Duvet	200x220 cm
Duvet	240x220 cm
Duvet	260x220 cm
Four seasons duvet	140x220 cm
Four seasons duvet	200x220 cm
Four seasons duvet	240x220 cm
Four seasons duvet	260x220 cm
Summer duvet	140x220 cm
Summer duvet	200x220 cm
Summer duvet	240x220 cm
Summer duvet	260x220 cm

THE NEW CLASSIC SYNTHETIC

Filling: 100% Thermosoft synthetic fiber
Cover: 100% cotton (sustainably grown), 160TC



Are you looking for a regular duvet and pillow? Then *The New Classic Synthetic* is a great choice. With a beautiful cotton cover and a high-quality synthetic hollow fiber filling, *The New Classic Synthetic* ensures years of wonderful sleep.

Four seasons duvet	140x200 cm
Four seasons duvet	140x220 cm
Four seasons duvet	200x220 cm
Four seasons duvet	240x220 cm
Four seasons duvet	260x220 cm
Pillow	60x70 cm

THE DOWN ALTERNATIVE

Filling: Ecodown® (100% recycled synthetic fibre)
Cover: 100% cotton percale (sustainably grown), 233TC and treated against dust mites



Do you want the comfort of down but the practical properties of synthetic? The Down Alternative is the best solution. The duvet and pillow are generously filled with 100% Ecodown® which made from 100% recycled polyester, a recycled synthetic fiber made from old plastic bottles. This makes this duvet and pillow wonderfully soft, full and airy. The cotton cover has a thread count of 233 and is treated against dust mites. Best of both worlds and even good for the environment. Now that's what we call a good night's sleep.

Duvet	140x220 cm
Duvet	200x220 cm
Duvet	240x220 cm
Duvet	260x220 cm
Four seasons duvet	140x220 cm
Four seasons duvet	200x220 cm
Four seasons duvet	240x220 cm
Four seasons duvet	260x220 cm
Summer duvet	140x220 cm
Summer duvet	200x220 cm
Summer duvet	240x220 cm
Summer duvet	260x220 cm
Pillow	60x70 cm

THE RECYCLED DOWN

Filling: 70% recycled down, 30% recycled feathers
 Cover: 100% cotton percale, 233TC



The down used for The Recycled Down has already had a very 'rewarding life'- but can last for many more years to come. The down from old, used duvets is collected and professionally washed. The best quality down is then selected to create The Recycled Down. The result: like new!

This entire recycling and production process takes place in The Netherlands. This supplier is the only company in the Netherlands that fully recycles duvets and pillows filled with down and feathers. In addition, 70% of the electricity involved in this process comes from solar panels. If the down cannot be re-used, organic fertilizer is made of this low-quality down. The cover of the old duvet is given a new life as cleaning cloth or insulation material. In this way, the entire duvet is recycled and the environment and new raw materials are spared.

Duvet	140x220 cm
Duvet	200x220 cm
Duvet	240x220 cm
Duvet	260x220 cm
Four seasons duvet	140x220 cm
Four seasons duvet	200x220 cm
Four seasons duvet	240x220 cm
Four seasons duvet	260x220 cm
Summer duvet	140x220 cm
Summer duvet	200x220 cm
Summer duvet	240x220 cm
Summer duvet	260x220 cm
Pillow	60x70 cm

MOLTONS & PILLOWCASES



MOLTON white
 Pillowcase 100% cotton, 240gr/m2
 2x 60x70 cm €29,95
 2x 60x70 cm €29,95
 (with zipper)



DALLAS white
 Pillowcase 100% polyester satin
 60x70 cm €12,95



DALLAS oyster
 Pillowcase 100% polyester satin
 60x70 cm €12,95



MOLTON white
 Fitted sheet
 100% cotton

80x190 cm	€39,95
80x200 cm	€39,95
80x210 cm	€39,95
90x190 cm	€49,95
90x200 cm	€49,95
90x210 cm	€49,95
90x220 cm	€49,95
100x200 cm	€49,95
140x200 cm	€59,95
140x220 cm	€59,95
160x200 cm	€59,95
160x220 cm	€59,95
180x200 cm	€69,95
180x210 cm	€69,95
180x220 cm	€69,95



WATERPROOF white
 Fitted sheet
 100% cotton / polyurethane

60x120 cm	€34,95
80x200 cm	€54,95
90x200 cm	€59,95
90x210 cm	€64,95
140x200 cm	€79,95
160x200 cm	€89,95
180x200 cm	€99,95

MULBERRY SILK ALICE



ALICE

Experience the ultimate feeling of luxury with the ESSENZA Alice collection, designed with 100% mulberry silk. Silk is naturally breathable and possesses moisture- and temperature-regulating qualities, helping to maintain optimal hydration for your skin and hair. Thanks to its natural hypoallergenic properties, silk ensures a low risk of allergic reactions. The supple and smooth texture of the material, boasting a silk density of 16 momme, guarantees pure softness and minimal friction against your skin and hair, allowing you to wake up feeling refreshed. Indulge in this luxurious product that nurtures you while you sleep.

100% Mulberry Silk

Sleeping Mask one size	€29,95
Pillowcase 40x60 cm	€69,95
Pillowcase 40x80 cm	€79,95
Pillowcase 60x70 cm	€79,95
Pillowcase 65x65 cm	€79,95



cloud grey



ivory



rose



white



cloud grey



ivory



rose



white



cloud grey



ivory



rose



white

ACCESSORIES

Accessories are the finishing touch when it comes to styling any interior. Add a couple of cushions, a snug plaid, an eye-catching carpet or velvety pouffe to create a cohesive and warm interior with a personal touch.



Cushion
Plaid
Carpet

YEKE easy green
KNITTED AJOUR morning swim
IMARA anthracite

DAILAH

The Dailah roll cushion gives the interior a chic touch through its shape, the soft velvet material and the piping. On top of that, it's also the perfect item to support the head for extra relaxation.

70% recycled polyester / 30% polyester velvet with piping
filling: 100% recycled polyester

roll cushion 22x50 cm (filled) €39,95

NAINA

Subtly shiny velvet in a round, pleated cushion. Naina adds an instant chic and playful look to the interior.

70% recycled polyester / 30% polyester velvet
filling: 100% recycled polyester

cushion round 40 cm (filled) €39,95

MADS

Mads is round, soft and fits perfectly within a natural look with its viscose and linen blend.

70% viscose / 30% linen
filling: 100% recycled polyester

cushion round 45 cm (filled) €39,95

GIGI

Gigi is round and the combination of linen with viscose and a ruffled edge makes it the perfect fit for a natural look.

70% viscose / 30% linen
filling: 100% recycled polyester

cushion round 45 cm (filled) €39,95



shell brown



ice blue



mustard



moss



cinnamon



denim



canyon rose



dusty lilac



dark teal



ochre



verdant green



cherry pink



pale beach



dry terra

RUTH

The Ruth plaids and quilts are extra soft due to the special combination of recycled polyester and enzyme washed polyester. The subtle topstitched pattern makes them look and feel even softer and more airy.

*70% recycled polyester / 30% polyester enzyme washed
microfibre filling: 100% recycled polyester*

plaid 150x200 cm	€89,95
quilt 180x265 cm	€129,95
quilt 220x265 cm	€159,95
quilt 270x265 cm	€189,95



anthracite



thyme



balsam



grape



laurel green



nightblue



cream



wine red



cinnamon



dark green



mustard



mustard



meringue



frosty mint



meringue



frosty mint



nightblue

BILLIE

Casually soft corduroy combined with subtle topstitched diamond pattern give the Billie collection a nonchalant look.

*70% recycled polyester / 30% polyester corduroy
wadding: 100% recycled polyester
filling cushion: 100% recycled polyester*

cushion 30x50 cm (filled)	€39,95
plaid 150x200 cm	€89,95
quilt 180x265 cm	€129,95
quilt 220x265 cm	€159,95
quilt 270x265 cm	€189,95

JULIA

The gorgeous stitched block pattern in combination with the lovely soft velvet provide the Julia collection with a nonchalant but chic look.

100% cotton velvet
filling: 100% recycled polyester

cushion 40x90 cm (filled)	€59,95
plaid 150x200 cm	€149,95
quilt 180x265 cm	€219,95
quilt 220x265 cm	€269,95
quilt 270x265 cm	€299,95



mauve



mauve



brulee



brulee



denim



denim



forest green



forest green



nightblue



nightblue



sand



sand

ROEBY

The Roebly collection gives any space an instant chic look through the subtle stitched paisley pattern in combination with the silky soft velvet.

70% recycled polyester / 30% polyester velvet
wadding: 50% recycled polyester / 50% cotton
filling cushions: 100% recycled polyester

cushion 30x50 cm (filled)	€39,95
plaid 150x200 cm	€119,95
quilt 180x265 cm	€189,95
quilt 220x265 cm	€219,95
quilt 270x265 cm	€289,95



moss



moss



chocolate



chocolate

TEDDY

These accessoires are made from soft, knotted fake fur and are the perfect addition for styling the interior due to the woolly texture.

cushions and roll cushions:
100% polyester fake fur
filling: 100% polyester

quilt and plaids:
front: 100% polyester fake fur
back: 100% polyester micro mink

cushion 50x50 cm (filled)	€34,95
roll cushion 22x50 cm (filled)	€39,95
plaid 150x200 cm	€69,95



vanilla



vanilla



vanilla



plum wine

FURRY & MAD'S FURRY

The Furry collection is made from ultra-soft fake fur. It's a perfect addition for styling the interior due to the thick, woolly texture and the broad range of colours to choose from.

cushions and roll cushions: 100% polyester fake fur; filling: 100% polyester
plaid: front: 100% polyester fake fur; back: 100% polyester micro mink

roll cushion 22x50 cm (filled) €39,95
 cushion 50x50 cm (filled) €34,95
 cushion round 45 cm (filled) €44,95
 plaid 150x200 cm €109,95



moss



bright terra



chocolate



taupe



nightblue



denim



leather brown



vanilla



rose



reef green



moss



bright terra



chocolate



taupe



nightblue



denim



leather brown



vanilla



rose



reef green



moss



bright terra



nightblue



denim



vanilla



rose



reef green



moss



bright terra



chocolate



taupe



nightblue



denim



leather brown



vanilla

KNITTED AJOUR

The openwork, airy pattern of the knitted ajour collection give the interior a romantic look.

100% organic cotton, GOTS certified
filling cushions: 100% recycled polyester

cushion 30x50 cm (filled)	€39,95
cushion 50x50 cm (filled)	€49,95
plaid 130x170 cm	€89,95



morning swim



antique white



fern yellow



morning swim



antique white



fern yellow



morning swim



antique white



fern yellow

FLEUR

The Fleur accessories collection shows the iconic Fleur design. For the Fleur, ESSENZA's designers selected various elements from famous flower still lifes from the Rijksmuseum to create a modern collage with classic allure. The background features a subtle shadow pattern of the print to give the design more depth.

cushions:
100% polyester velvet with piping
filling: 100% recycled polyester

quilt and plaids:
100% polyester velvet
wadding: 100% polyester

cushion 50x50 cm (filled)	€39,95
roll cushion 22x50 cm (filled)	€44,95
plaid 135x170 cm	€109,95
bed runner 240x100 cm	€109,95
quilt 180x265 cm	€179,95
quilt 220x265 cm	€209,95
quilt 270x265 cm	€239,95



grey



nightblue



moss



grey



burgundy



nightblue



moss



grey

PRINT ACCESSORIES

The print accessoires offer a unique finishing touch for the interior.
The rich prints are executed in super soft, lightly shiny velvet.

100% recycled polyester velvet, with piping

100% polyester velvet, with piping*

filling: 100% recycled polyester

cushion 30x50 cm (filled)	€34,95
cushion 50x50 cm (filled)	€39,95
roll cushion 22x50 cm (filled)	€44,95
cushion 40x90 cm (filled)	€59,95

front: 100% recycled polyester velvet

back: 70% recycled polyester, 30% polyester

filling: 100% recycled polyester

** 100% polyester velvet

filling: 100% polyester

plaid 135x170 cm	€109,95
bed runner 240x100 cm	€109,95
quilt 180x265 cm	€179,95
quilt 220x265 cm	€209,95
quilt 270x265 cm	€239,95



Mh

Floral girl black*



Lisa silk**



Ophelia sahara sun



Mh

Daffodils reunited black*



Imara anthracite



Yfke easy green



Yfke cobalt blue



Annebella zen blue



Annebella vanilla



Karli reef green



Ophelia sahara sun



Mh

Daffodils reunited beachwood white*



Imara anthracite



Yfke easy green



Yfke cobalt blue



Annebella zen blue



Annebella vanilla



Karli darling pink



Ophelia sahara sun



Mh

Elegant view sky



Pouf
Carpet
YFKE cobalt blue
LEILA vanilla

POUFS

The most beautiful prints from our collections are being showcased on our elegant velvet poufs. These poufs aren't just a picture to behold, they are incredibly versatile - use them as a side table, additional seat or as a night stand.

- *polyester fake fur Ø 60 cm, height 37 cm €159,95
- **polyester fake fur Ø 40 cm, height 43 cm €99,95
- polyester velvet Ø 40 cm, height 43 cm €99,95



Karli reef green



Furry leather brown**



Karli darling pink



Imara anthracite



Furry denim**



Tesse reef green



Teddy vanilla*



Yfke cobalt blue



Furry chocolate**



Ophelia hazy blue



Cushion IMARA anthracite
 Plaid KNITTED AJOUR antique white
 Carpet IMARA anthracite
 Pouf IMARA anthracite

CARPETS

A rug provides a perfect canvas to showcase the unique prints from the ESSENZA collections. Available in various sizes to instantly give any room a unique, warm look.

60% polyester / 30% thermoplastic polyurethane / 10% cotton

carpet 60x90 cm €44,95
 *carpet 120x180 cm €129,95
 **carpet 180x240 cm €229,95
 *, ** size not available

carpet round 90 cm €54,95
 carpet round 180 cm €169,95



FLEUR finest grey



*MAERE hazy blue



Mh

ELEGANT VIEW sky



Mh

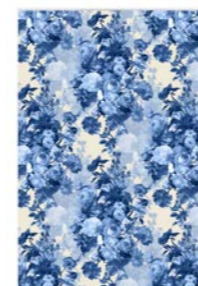
FLORAL GIRL black



**FLEUR taupe



FLEUR grey



LEILA vanilla



IMARA anthracite



TESSE reef green



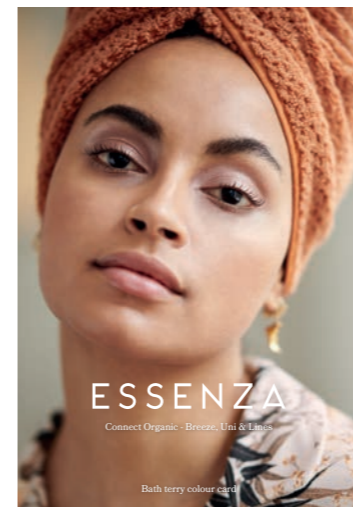
FLORA nightblue



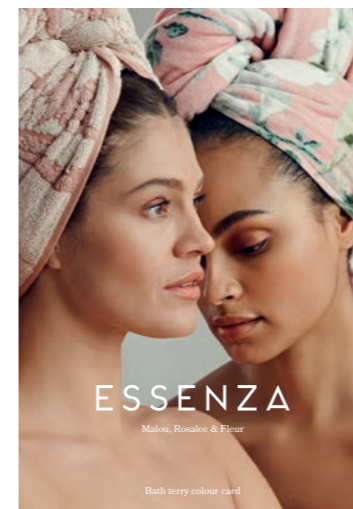
TOWELLING



The ESSENZA towelling collections are made from lovely soft cotton velvet. The organic cotton towels carry a GOTS certificate, which indicates that production took place in an environmentally and socially responsible manner.



CONNECT ORGANIC
BREEZE, UNI & LINES
bath terry colour card
paper, A4



MALOU, ROSALEE & FLEUR
bath terry colour card
paper, A4

BEACH TOWELS



The Beach towelling collection offers a unique beach look. The rich patterns are jacquard woven and executed in super-soft cotton velours and are finished with an edge featuring an golden embroidered ESSENZA logo.

100% organic cotton velours, GOTS certified, 400 gr/m²
with logo in gold embroidery

beach towel 100x180 cm

€39,95



IMARA anthracite



IMARA violet



MALOU

The ESSENZA Malou towelling collection shows a stunning, detailed jacquard weave with ton-sur-ton flower print. The collection is available in various colours and the organic cotton is lovely and soft on the skin. The towels are finished with an edge featuring an embroidered ESSENZA logo in gold.

*100% organic cotton velours, jacquard woven, GOTS certified
500 gr/m², with logo in gold embroidery*

*washcloth 16x22 cm	€4,95
guest towel 30x50 cm	€8,95
hand towel 60x110 cm	€19,95
bath towel 70x140 cm	€39,95



natural



yellow



rose



green



blue



plum



grey



FLEUR

The Fleur towelling collection is made from super soft cotton and is finished with a flowery edge that contains the iconic Fleur design. For the Fleur, ESSENZA's designers selected various elements from famous flower still lifes from the Rijksmuseum which you'll find in the luxurious edge at the bottom of the towels.

97% cotton / 3% polyester, 530 gr/m²

*washcloth 16x22 cm	€4,95
guest towel 30x50 cm	€6,95
hand towel 60x110 cm	€17,95
bath towel 70x140 cm	€29,95



dusty rose*



plum*



natural



dark green*



green



taupe*



yellow*



rose



blue



ROSALEE

The Rosalee organic cotton towelling collection features different picturesque white flowers that originate from various paintings from the Rijksmuseum in Amsterdam. The towels are finished with an edge from jacquard weave with dot design and feature a golden embroidered logo.

*100% organic cotton velours, GOTS certified
500 gr/m², with logo in gold embroidery*

washcloth 16x22 cm	€5,95
guest towel 30x50 cm	€9,95
hand towel 55x100 cm	€24,95
bath towel 70x140 cm	€44,95



plum



natural

CONNECT ORGANIC

ESSENZA's Connect organic towelling collection offers super soft, organic cotton terry towels in a broad palette of soft, natural colours. Available in the uni, breeze & lines styles, the collection offers unique textures that are perfect for mixing & matching. The towels are finished with an edge featuring a subtle, embroidered ESSENZA logo.

100% organic cotton, GOTS certified, 600 gr/m²

washcloth 16x22 cm	€6,95
guest towel 30x50 cm	€9,95
hand towel 50x100 cm	€22,95
hand towel 60x110 cm	€27,95
bath towel 70x140 cm	€39,95

100% organic cotton, GOTS certified, 1100 gr/m²

bathmat 60x100 cm	€39,95
-------------------	--------



rose



rose



green



green



blue



blue



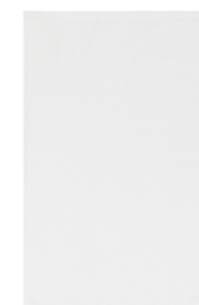
grey



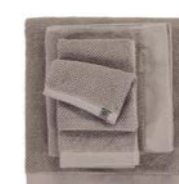
grey



white



white



natural



natural



PRINTED TOWELS

The Printed towelling collection offers the bathroom a unique finishing touch. The rich prints are executed in super-soft organic cotton velours and are finished with an edge featuring an ESSENZA logo embroidered in gold. Tip: mix & match the printed towelling collection with the Connect Organic line to make the prints stand out even more.

*100% organic cotton velours, GOTS certified
500 gr/m², with logo in gold embroidery*

guest towel 30x50 cm	€9,95
hand towel 50x100 cm	€24,95
bath towel 70x140 cm	€44,95



Ophelia darling pink



Sol darling pink



Sol comforting green



Karli reef green



BATHROBES & HOMECOATS

This collection offers super-soft and comfortable bathrobes & home coats that are executed in classic uni's and characteristic ESSENZA prints. Perfect for relaxation at home.



Perri Rosalee blue bathrobe (midi)
100% cotton velour GOTS
SRP €119,95



Perri Rosalee rose bathrobe (midi)
100% cotton velour GOTS
SRP €119,95



Perri Ophelia darling pink bathrobe (midi)
100% cotton velour GOTS
SRP €119,95



Perri Karli reef green bathrobe (midi)
100% cotton velour GOTS
SRP €119,95



Nama Uni sloe blue homecoat (midi)
100% polyester
SRP €99,95



Nama Uni rose homecoat (midi)
100% polyester
SRP €99,95



Louise Moss bathrobe (midi)
60% cotton / 40% polyester
SRP €59,95



Louise Navy bathrobe (midi)
60% cotton / 40% polyester
SRP €59,95



Fleur taupe
homecoat (midi)
100% polyester fleece
SRP €69,95



Fleur ecru
homecoat (midi)
100% polyester fleece
SRP €69,95



Fleur nightblue
homecoat (midi)
100% polyester fleece
SRP €69,95



Rosa Uni dark navy
homecoat (midi)
100% organic cotton
wadding: 100% recycled polyester
SRP €129,95



Connect Organic Uni white
bathrobe (midi)
100% organic cotton 420 gr/m2
SRP €119,95



Connect Organic Uni blue
bathrobe (midi)
100% organic cotton 420 gr/m2
SRP €119,95



Connect Organic Uni green
bathrobe (midi)
100% organic cotton 420 gr/m2
SRP €119,95



Connect Organic Uni rose
bathrobe (midi)
100% organic cotton 420 gr/m2
SRP €119,95



Kimono
Shorts
SARAI ISABELLA azur blue
NORI ISABELLA azur blue

KIMONOS

The kimono collection shows elegant, soft kimonos executed in the finest materials and with characteristic ESSENZA prints. The wide sleeves and the subtle belt create a playful, nonchalant look.



Sarai Tilia pure white kimono (short) XS-XXL
100% cotton
SRP €99,95



Sarai Lenthe sloe blue kimono (short) XS-XXL
100% cotton satin
SRP €49,95



Sarai Isabella azur blue kimono (short) XS-XXL
100% cotton satin
SRP €59,95



Sarai Noleste greenish kimono (short) XS-XXL
100% cotton satin
SRP €59,95



Sarai Ophelia darling pink kimono (short) S-XXL
100% cotton satin
SRP €59,95



Sarai Flora nightblue kimono (short) XS-XXL
100% cotton satin
SRP €59,95



Kimono

SARAI KARLI magnolia pink



Sarai Karli reef green kimono (short) XS-XXL
100% cotton satin
SRP €59,95



Sarai Karli darling pink kimono (short) XS-XXL
100% cotton satin
SRP €59,95



Sarai Karli magnolia pink kimono (short) XS-XXL
100% cotton satin
SRP €59,95



Sarai Karli deep sea blue kimono (short) XS-XXL
100% cotton satin
SRP €59,95



Fleur nightblue kimono (short) XS-XL
100% cotton satin
SRP €49,95



Fleur ecru kimono (short) XS-XL
100% cotton satin
SRP €49,95



Fleur rose kimono (short) XS-XL
100% cotton satin
SRP €49,95



Sarai Fleur Festive blooming black kimono (short) XS-XXL
100% cotton satin
SRP €49,95

Kimonos



Kimono
Shorts
Top

JULA IMARA anthracite
BELLA IMARA anthracite
POPPY IMARA anthracite



Jula Imara anthracite
kimono (long) XS-XXL
65% modal / 33% cotton / 2% elastane
SRP €149,95



Jula Leila vanilla
kimono (long) XS-XXL
65% modal / 33% cotton / 2% elastane
SRP €149,95



Ilona Annebella vanilla
kimono (midi) XS-XXL
70% lyocell / 30% cotton
SRP €69,95



Men

Pete Tesse zen blue
kimono (midi) S-XXL
65% modal / 33% cotton / 2% elastane
SRP €189,95



Men

Pete Floor night blue
kimono (midi) S-XXL
65% modal / 33% cotton / 2% elastane
SRP €189,95



Jula Daffodils Reunited black
kimono (ankle length) XS-XXL
100% cotton satin
SRP €119,95



Jula Karli darling pink
kimono (long) S-XXL
100% cotton satin
SRP €79,95



Ilona Karli magnolia pink
kimono (midi) XS-XXL
100% polyester
SRP €89,95



Ilona Karli deep sea blue
kimono (midi) XS-XXL
100% polyester
SRP €89,95



Duvet cover
Cushions
Cushion

ANNEBELLA vanilla
ANNEBELLA vanilla
FURRY bright terra



Kimono ANNEBELLA vanilla



BAGS

From make-up bag to weekend bag: whatever bag you're looking for, ESSENZA has a matching beauty to transport your belongings.

outside: 100% cotton quilted (PVC free)

inside: 100% polyester (PVC free)

make-up bag €39,95
B 20 cm x D 8 cm x H 11 cm

toilet bag €49,95
B 28 cm x D 13 cm x H 17 cm

beautycase €59,95
B 25 cm x D 17 cm x H 17 cm



MEGAN OPHELIA
nightblue
make-up bag



MEGAN JULIETTE
almost black
make-up bag



MEGAN OPHELIA
midnight swim
make-up bag



MEGAN KARLI
reef green
make-up bag



MEGAN KARLI
darling pink
make-up bag



PEPPER OPHELIA
nightblue
toilet bag



PEPPER JULIETTE
almost black
toilet bag



PEPPER OPHELIA
midnight swim
toilet bag



TRACY OPHELIA
nightblue
beauty case



TRACY JULIETTE
almost black
beauty case



TRACY KARLI
reef green
beauty case



TRACY OPHELIA
darling pink
beauty case

TEDDY

Outside: 100% polyester velvet (PVC free)
 Inside: 100% polyester (PVC free)
 The underside has a protective PU layer.

MEGAN make-up bag €29,95
 B 20 cm x D 8 cm x H 11 cm

PEYTON shoulder bag €59,95
 B 42 cm x D 12,5 cm x H 35 cm

PEBBLES weekender €99,95
 B 50 cm x D 20 cm x H 30 cm

TRACY beautycase €44,95
 B 25 cm x D 17 cm x H 17 cm



MEGAN TEDDY leather brown
make-up bag



TRACY TEDDY vanilla
beautycase



PEYTON TEDDY leather brown
shoulder bag



TRACY TEDDY nightblue
beautycase



PEBBLES TEDDY vanilla
weekender



PEBBLES TEDDY leather brown
weekender





MERCHANDISE

The perfect gifts to occasionally surprise your customer. Our merchandise collection offers promotional items such as a stylish notebook or a lovely shopper adorned with iconic ESSENZA prints.

XL shopper, 100% polypropylene
B 60 cm x D 20 cm x H 40 cm €11,95

Notebook, paper
A5 €12,95



Aurelie iceblue



Verena antique white



Isabelle marsala



Lauren indigo blue



Aurelie iceblue



Verena antique white



Isabelle marsala



Gwyneth nightblue



Scarlett vanilla



Carice multi



Fauve antique white



DISCOVER MORE

Scan the QR codes and discover the other product groups!

FRAGRANCES

'Fragrance is the key to our memories.' The fragrance collection awakes the senses and transport you to another world. The perfect addition to our home collections to bring atmosphere, calm and relaxation to the home.



[Discover more - Fragrances](#)

THE HOMEWEAR COLLECTION

The ESSENZA home wear collection offers all you need to give the wardrobe a stylish update. Every season, items like shiny kimonos, stylish lounge pants and elegant night gowns in gorgeous trend colours and with the most beautiful prints are being added to this collection.



[Discover more - The Homewear Collection](#)

ESSENZA FOR MAURITSHUIS

The ESSENZA for Mauritshuis collection brings age old art to life in your very own home. Famous paintings from the Old Masters inspired ESSENZA to create timeless designs, which are reflected in this masterpiece collection.



PORCELAIN

ESSENZA's porcelain collections are inspired by the beautiful flower still lifes by the Dutch Masters and luxurious porcelain objects from the far East. The high quality items are hand made, so that each piece is unique. Elegant shapes, chic sheen and golden details make this tableware extra special. Mix & match the collections to create a personal piece of art on your dining table.



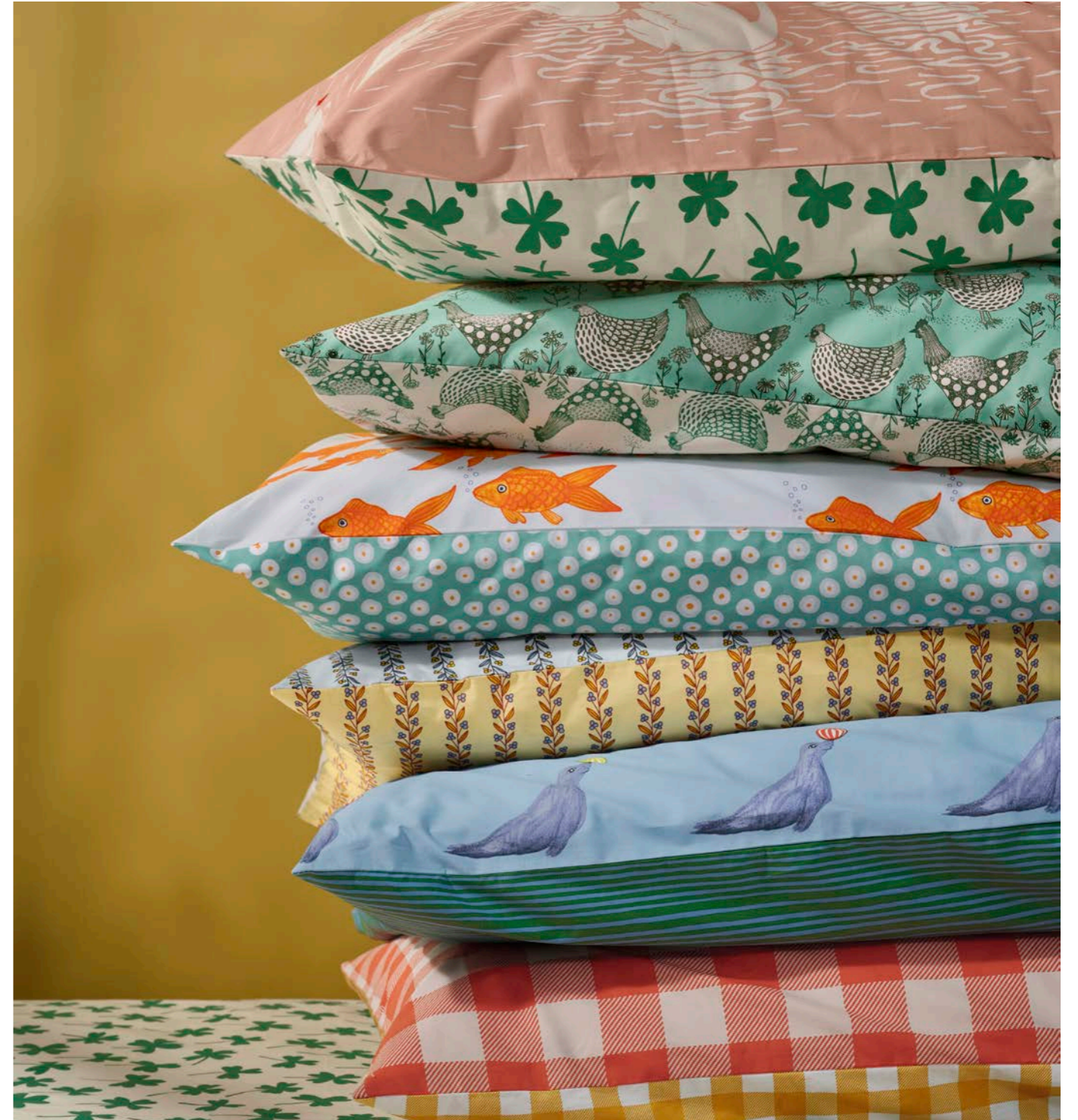
DUVETS AND PILLOWS

This ESSENZA collection of duvets and pillows, is developed with innovation and sustainability in mind. The collection consists of five different duvets and four pillows. With every product we are innovative in the use of materials and sustainable in the use of recycled or sustainably produced materials. With the use of both natural and synthetically produced materials, there is something for every sleeper.



ESSENZA & CO

'Any mood, any bedroom, anyone.' ESSENZA & CO dares to clash in full colour and designs with respect for tradition. The brand embraces the art of mixing and matching prints. The designers take inspiration from art and give traditional details a modern, graphic touch by surprising in use of colour and placement of prints. With their reversible covers, they invite you to explore endless possibilities and unleash your imagination. These high-quality products are made to last and delight the young and the young at heart alike. Join us in dreaming of a colourful world.





OUR SUSTAINABILITY JOURNEY

Sustainability is a big theme at ESSENZA. We cannot– and do not want to – ignore this in today’s world. It is not only an important point for us and for the environment, but also for all future generations. This is why we work and produce with as much care and attention as possible for people, the environment and society. We are continuously working to make our organisation – and in particular, our development and production process – more sustainable and to take our social responsibility to all links in the chain.

Our CSR mission and vision

We have made it our own social mission to ensure a great nights’ sleep for EVERYone. And we don’t just limit that mission to the consumer enjoying our lovely soft bedding and delightful pyjama’s. We include those people working in our supply chains too, and anyone who works within our offices, all retailers and people working in the shops. So, it’s for anyone connected to ESSENZA HOME in any way. We can only ensure a good nights’ sleep when we produce in a sustainable manner with eye for both people and the environment. When everyone in our chain is treated fairly, can do their job safely and is paid a living wage for their labour. That’s why we work hard towards an honest and sustainable future. That has become our vision: we strive towards a financially healthy business with eye for both people and the environment.

Our focuspoints

Going forward from the roundup of our participation in The Dutch Agreement on Sustainable Garments and Textiles we’ve established eleven different focus points, divided over three themes.

Theme 1: Chain transparency

Producing from a distance can be subjected to risks, as we are not present ourselves to monitor the process. Every link in the chain adds value to our products but has an impact on both people and the environment at the same time. We work hard to reduce this impact and are making sustainability a core concept throughout the entire production chain. It is therefore essential to know which route our products take, from raw material to product in our warehouse and finally to the consumer. In essence, this is the imperative foundation from which we deal with all our focus points.

Theme 2: Impact on people

There are many people involved in our production processes. This makes it even more important to be as much informed as possible about the wellbeing of those working within our supply chain. We do so by focussing on the following points: rights to freedom of association, forced labour, child labour, discrimination and gender, living wage, health and safety in the workplace & long-term partnerships.

Theme 3: Impact on the environment

The textile industry has a huge impact on the environment. Within the production process, raw materials are sourced, processed, treated, and transported. This imposes various adverse risks for the environment, which we divided into focus points so that we can closely monitor them and actively implement policies. We focus on water usage, energy & chemicals, sustainable products, product safety, purchasing practices and animal welfare.



Erfahren Sie mehr über unsere Nachhaltigkeitsreise.



Ontdek meer over onze duurzaamheidsreis.



Discover more about our journey to sustainability.

CREDITS

A special thank you to everyone who has lent us his/her beautiful product/item. This embraces and intensifies the feeling we want to create with our collection and it completes the story. It's all about the details!



PAINTING Abstract Painting Olive/Nude
www.hkliving.com



VASE
www.nationaalglasmuseum.nl



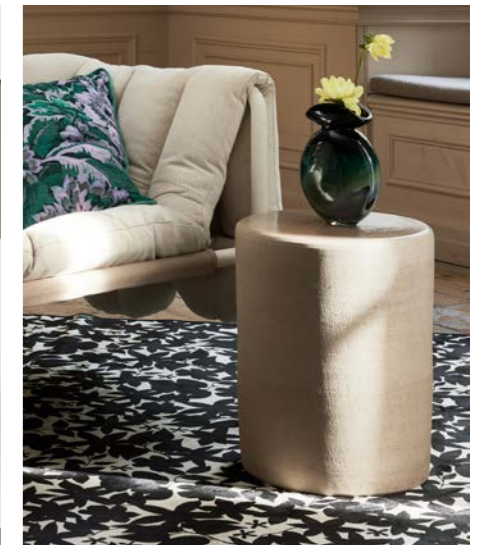
TABLE Mirror block table
www.hkliving.com



DAYBED Umi
www.sofacompany.com



LAMP
www.portaromana.com



VASE
www.nationaalglasmuseum.nl



POUF Danny Cream
www.sofacompany.com



VASE
www.nationaalglasmuseum.nl



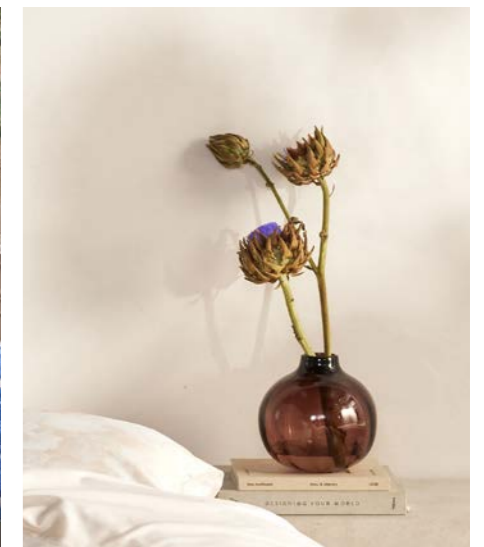
VASE
www.nationaalglasmuseum.nl



POUF Abby hockers Moss Grass Green
www.sofacompany.com



PAINTING
www.rozemarlinborkent.com



VASE
www.nationaalglasmuseum.nl

COLOPHON

ESSENZA® is a registered trademark of ESSENZA HOME Bunnik - The Netherlands. This brochure is published by ESSENZA HOME and serves as an image catalog. Images can sometimes differ, ranges are non-binding and without obligation. All prices mentioned in this book are Suggested Retail Prices. Marketing & Sales by ESSENZA HOME. We refer to our selective distribution guidelines. Errors and changes excepted. No part of this publication may be reproduced, stored in a retrieval system or transmitted in any form or by any means, electronic, mechanical, photocopying, recording or otherwise, without the prior permission of ESSENZA HOME changes in colors and styles with reservation.

Contact

INTERNATIONAL
ESSENZAHOME.com
info@essenzahome.com
+31 (0)30 304 1500

GERMANY, AUSTRIA & SWITZERLAND
ESSENZAHOME.de
info@essenzahome.de
+49 (0)286 18 11 64-0

FRANCE
ESSENZAHOME.fr
info@essenzahome.fr
+33 (0)782 14 17 41

EASTERN EUROPE/MIDDLE EAST
ESSENZAHOME.com
info@essenzahome.com
+31 (0)30 304 1500

CANADA
ESSENZAHOME.com
www.textilecity.ca
archie@textilecity.ca
+1 (0)905 817 1300 ext. 248

Sales

DENMARK
EUROTEX
eurotex.dk
eurotex@eurotex.dk
+45 (0)40 25 00 97

ITALY
MUM S.R.L.
DISTRIBUZIONE TESSILE
mumsl.it
info@mumsl.it
+39 (0)434 63 33 15

FINLAND & BALTIC
MAGASIN LARECO FRIEND OF BRANDS OY
magasin.nu
nina@magasin.nu
+358 403 567 830

Photography

Interior
ALEXANDER VAN BERGE
www.alexandervanberge.nl

Models
NINE IJFF
www.ijffphotography.com

Styling

Interior
YVONNE TEIJGEMAN
www.teijgeman.com

Models
MAARTJE VAN DEN BROEK
www.maartjevandenbroek.nl





ESSENZA